

# Current and voltage are our passion

Many years of experience, comprehensive expertise, international market presence and the desire to continuously develop our products; these aspects make us an efficient and solution-orientated partner.

# An optimistic view of the future

«We have developed from simple origins. Emil Pfiffner founded the company more than 80 years ago. Full of ideas and innovative energy but with little commercial expertise, he was operating in a difficult economic and political environment. My father was his first apprentice, and after 25 years he became the managing director of the company, a role that he then conferred upon me 35 years later.

As the smallest of six Swiss instrument transformer companies, we were in a constant battle for survival. This shaped us and gave us the capacity to keep going in the face of subsequent international competition. With a flair for recognising opportunities and using them, we developed into an internationally active, medium-sized company.

Despite strong growth, a modern infrastructure and a group turnover of more than CHF 100 million, the original spirit of enterprise continues. We want to remain a simple and modest but above all, an innovative and efficient organisation. Thanks to our customers, suppliers and staff we are taking an optimistic view of the future.»

Fritz Hunziker  
President PFIFFNER Holding Ltd



# Medium voltage instrument transformers

PIFFNER has been producing instrument transformers for more than 80 years. The devices perform their tasks in electric plant – day and night, summer and winter. Our instrument transformers meet the requirements of the international customers and are designed for a service life of 40 years.

Our medium-voltage instrument transformers are encapsulated under vacuum with epoxy resin. At operating voltage they are free from partial discharges and guarantee long term and safe operation. The instrument transformers can be officially calibrated in our certified laboratories to meet customer requirements.





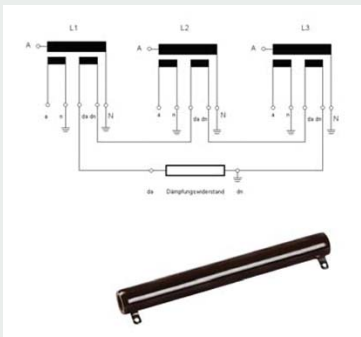
1

### Voltage transformer single-pole

## GD 12 - 36

- epoxy resin-insulated, block design
- for indoor application
- partial discharge free at operating voltage
- type-approved according to IEC
- free choice of mounting position
- tropicalised
- maintenance-free

Available with secondary for open delta connection.  
Appropriate resistances for ferro-resonance damping available as accessories.  
[1]



2

### Voltage transformer bipolar

## GD2 12 - 36

- epoxy resin-insulated, block design
- for indoor application
- partial discharge free at operating voltage
- type-approved according to IEC
- free choice of mounting position
- tropicalised
- maintenance-free

Authorised for official calibration  
[1, 2, 3]



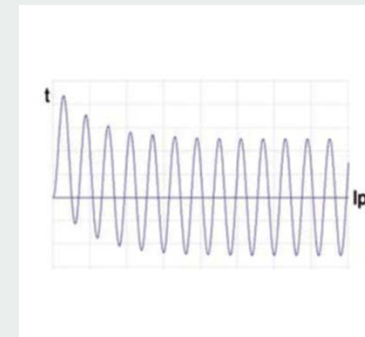
3

### Current transformer

## AD 12 - 36

- epoxy resin-insulated, block design
- for indoor application
- partial discharge free at operating voltage
- type-approved according to IEC
- free choice of mounting position
- tropicalised
- maintenance-free

Current transformer short-time current-proof even for short-circuited secondary windings according to IEC  
[3, 4, 5]





2

### Current transformer **AKQ 12 - 36**

- epoxy resin-insulated
- for indoor application with uninsulated conductor
- primary current up to 15'000 A
- partial discharge free at operating voltage
- type-approved according to IEC
- free choice of mounting position
- tropicalised
- maintenance-free

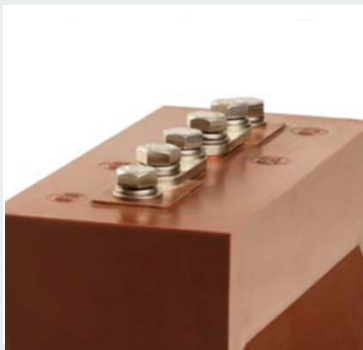


3

### Current transformer **AKP 12 - 36**

- epoxy resin-insulated
- for indoor application
- partial discharge free at operating voltage
- type-approved according to IEC
- free choice of mounting position
- tropicalised
- maintenance-free

Current transformer with primary change-over available  
[3]



The form of the primary conductor can be freely chosen as the conductor is connected to the high voltage coating (screw P).  
[4]



Customer-specific designs for space-saving and low-cost solutions in retrofit projects  
[5]



# M.V. Resin Cast Instrument Transformers

## Current Transformers



+ true values



Page	Design	Current Transformer Block type Epoxy resin insulation Indoor DIN 42600 compatible	Current Transformer Block type Epoxy resin insulation Indoor DIN 42600 compatible	Current Transformer Block type Epoxy resin insulation Indoor DIN 42600 compatible	Current Transformer Block type Epoxy resin insulation Indoor DIN 42600 compatible	Current Transformer Block type Epoxy resin insulation Indoor DIN 42600 compatible	
	Um (kV)	up to 12 kV	up to 12 kV	up to 12 kV	up to 12 kV	up to 12 kV	
	Type	ADA 12 ADA 12S	ADB 12 ADB 12S	ADC 12 ADC 12S	ADD 12 ADD 12S	ADE 12 ADE 12S	
		19	20	21	22	23	

# M.V. Resin Cast Instrument Transformers

## Current Transformers



Page	Design	Current Transformer Block type Epoxy resin insulation Indoor DIN 42600 compatible	Current Transformer Block type Epoxy resin insulation Indoor DIN 42600 compatible	Current Transformer Block type Epoxy resin insulation Indoor DIN 42600 compatible	Current Transformer Block type Epoxy resin insulation Indoor DIN 42600 compatible	Current Transformer Block type Epoxy resin insulation Indoor DIN 42600 compatible
	Um (kV)	up to 12 kV	up to 12 kV	up to 24 kV	up to 24 kV	up to 24 kV
	Type	ADF 12 ADF 12S	ADG 12 ADG 12S	ADA 24 ADA 24 S	ADB 24 ADB 24 S	ADC 24 ADC 24 S
		24	25	26	27	28

# M.V. Resin Cast Instrument Transformers

## Current Transformers



+ true values



Page	Design	Current Transformer Block type Epoxy resin insulation Indoor DIN 42600 compatible	Current Transformer Block type Epoxy resin insulation Indoor DIN 42600 compatible	Current Transformer Block type Epoxy resin insulation Indoor DIN 42600 compatible	Current Transformer Block type Epoxy resin insulation Indoor DIN 42600 compatible	Current Transformer Block type Epoxy resin insulation Indoor DIN 42600 compatible	
	Um (kV)	up to 36 kV	up to 36 kV	up to 36 kV	up to 36 kV	up to 36 kV	
	Type	ADA 36 ADA 36 S	ADB 36 ADB 36 S	ADC 36 ADC 36 S	ADD 36 ADD 36 S	ADE 36 ADE 36 S	
		29	30	31	32	33	



# L.V. Instrument Transformers

## Current Transformers

### Torodial CT'S



Design

Current Transformer  
Trodiol type  
Low valtage insulation  
Indoor

Current Transformer  
Trodiol type  
Low valtage insulation  
Indoor

Current Transformer  
Trodiol type  
Low valtage insulation  
Indoor

Current Transformer  
Trodiol type  
Low valtage insulation  
Indoor

Current Transformer  
Trodiol type  
Low valtage insulation  
Indoor

Um (kV)

up to 0,72 kV

up to 0,72 kV

up to 0.72 kV

up to 0.72 kV

up to 0.72 kV

Type

RCT-A

RCT-B

RCTK Di 75 mm

RCTK Di 95 mm

ZCT

Page

34

35

36

37

38

# Voltage Transformers Single Pole



+ true values



Design

Voltage Transformer  
Block type  
Epoxy resin insulation  
Indoor  
DIN 42600 compatible

Voltage Transformer  
Block type  
Epoxy resin insulation  
Indoor  
DIN 42600 compatible

Voltage Transformer  
Block type  
Epoxy resin insulation  
Indoor  
DIN 42600 compatible

Um (kV)

up to 12 kV

up to 12 kV

up to 24 kV

Type

GDA 12  
GDA 12 S

GDB 12  
GDB 12 S

GDA 24  
GDA 24 S

Page

39

40

41

# Voltage Transformers Single Pole



Design

Voltage Transformer  
Block type  
Epoxy resin insulation  
Indoor  
DIN 42600 compatible

Um (kV)

up to 24 kV

Type

GDB 24  
GDB 24 S

Page

42

Voltage Transformer  
Block type  
Epoxy resin insulation  
Indoor  
DIN 42600 compatible

up to 36 kV

GDA 36  
GDA 36 S

43

Voltage Transformer  
Block type  
Epoxy resin insulation  
Indoor  
DIN 42600 compatible

up to 36 kV

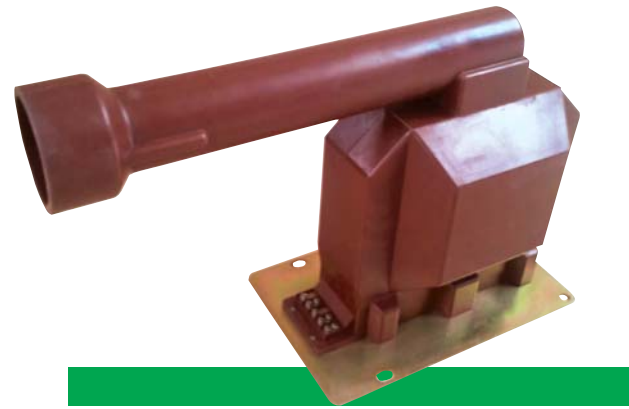
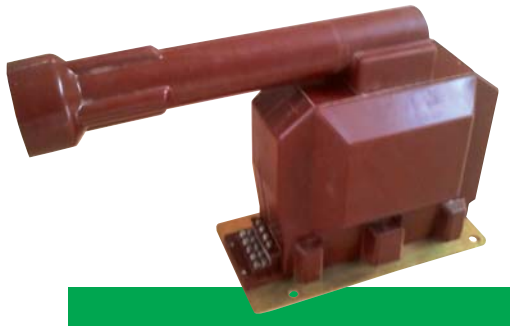
GDB 36  
GDB 36 S

44

# M.V. Resin Cast Instrument Transformers Single Pole with Primary Fuse



+ true values



Design	Voltage Transformer Block type Epoxy resin insulation Indoor DIN 42600 compatible	Voltage Transformer Block type Epoxy resin insulation Indoor DIN 42600 compatible	Voltage Transformer Block type Epoxy resin insulation Indoor DIN 42600 compatible
	up to 12 kV	up to 24 kV	up to 36 kV
	GDC 12 GDC 12 S	GDC 24 GDC 24 S	GDC 36 GDC 36 S
	45	46	47

# Voltage Transformers Double Pole



Design

Voltage Transformer  
Double Pole  
Block type  
Epoxy resin insulation  
Indoor  
DIN 42600 compatible

Um (kV)

up to 12 kV

Type

GD2A 12  
GD2A 12 S

Page

48

Voltage Transformer  
Double Pole  
Block type  
Epoxy resin insulation  
Indoor  
DIN 42600 compatible

up to 24 kV

GD2A 24  
GD2A 24 S

49

Voltage Transformer  
Double Pole  
Block type  
Epoxy resin insulation  
Indoor  
DIN 42600 compatible

up to 36 kV

GD2A 36  
GD2A 36 S

50

# M.V. Resin Cast Instrument Transformers Special Types



+ true values



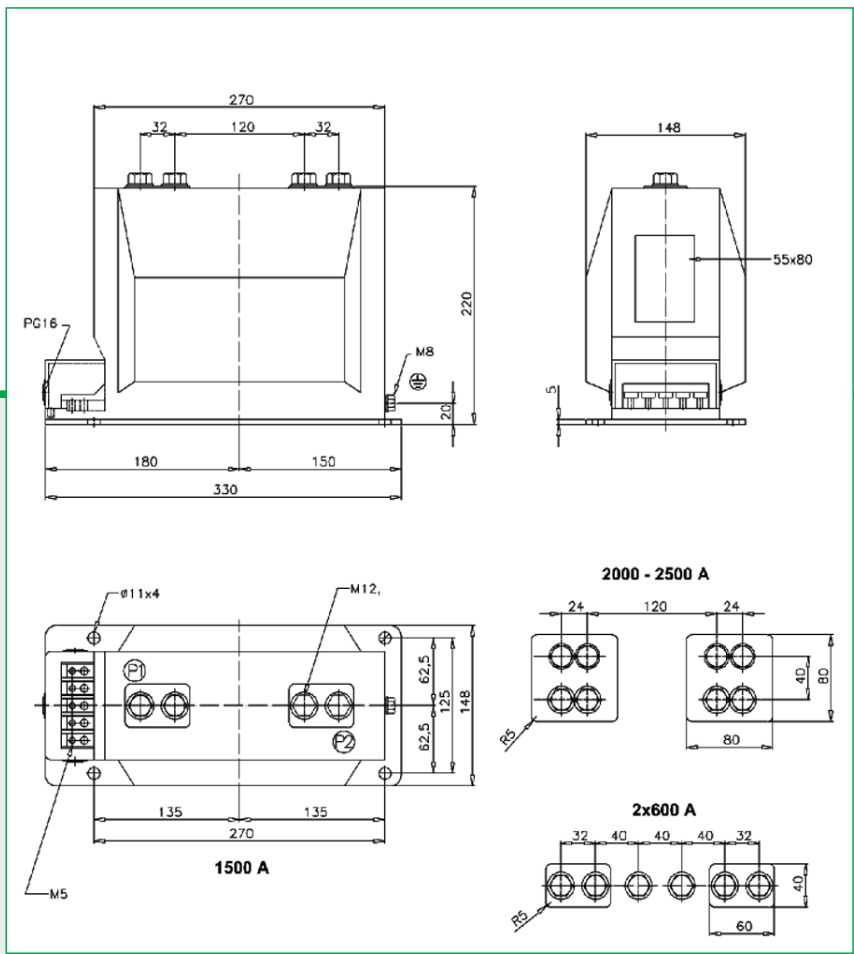
Page	Design	Current Transformer Block type Epoxy resin insulation Indoor	Current Transformer Block type Epoxy resin insulation Indoor	Current Transformer Block type Epoxy resin insulation Outdoor
	Um (kV)			
	Type	AKP 24	AKP 36	EZD 7961
		51	52	53

# Indoor Current Transformers

## ADA 12

## ADA 12S

Current Transformer  
 Block type  
 Epoxy resin insulation  
 Indoor  
 DIN 42600 compatible



### Indications for the ordering

- Type designation
- Nominal primary current
- Nominal secondary current
- Frequency
- Nominal output
- Accuracy class
- Short-time thermal current

### TECHNICAL DATA

Max. Operating Voltage, kV	12 kV
Rated Power Freq. Withstand Voltage (1 min)	28kV
Rated Impulse Test Voltage (1.2/50ys)	75 kV
Rated Frequency	50 Hz, 60 Hz
Primary Rated Current	10-2500 A
Primary Reconnection	2x10A - 2x600A
Output for Accuracy Classes	1A, 5A
Rated Short Time Thermal Current I <sub>th</sub> (I <sub>s</sub> )	Max. (60kA, 10001n)
Rated Dynamic Current I <sub>dyn</sub>	2.5xI <sub>th</sub> , max. 120kA
Insulation Class	E
Ambient Temperature	-5.....+40°C
Altitude	1000 m
Standard	TS, IEC, VDE, ANSI
Weight	22 kg

# Indoor Current Transformers

**ADB 12**  
**ADB 12S**

Current Transformer  
Block type  
Epoxy resin insulation  
Indoor  
DIN 42600 compatible



## Indications for the ordering

- Type designation
- Nominal primary current
- Nominal secondary current
  - Frequency
- Nominal output
- Accuracy class
- Short-time thermal current

## TECHNICAL DATA

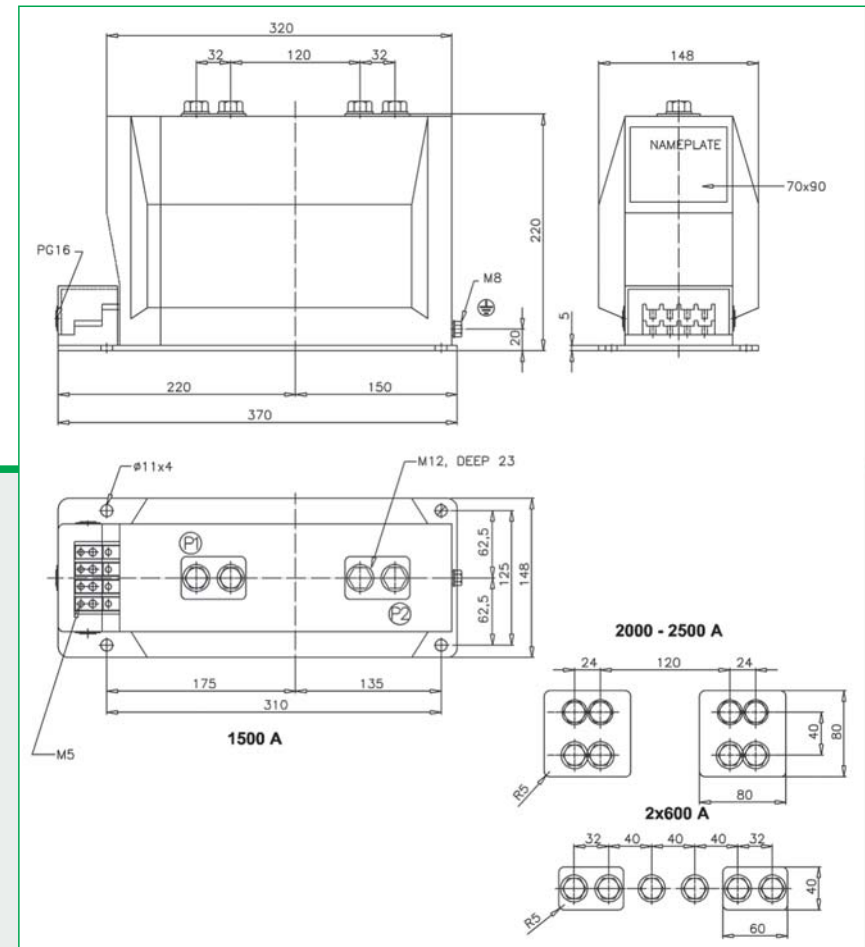
Max. Operating Voltage, kV  
Rated Power Freq. Withstand Voltage (1 min)  
Rated Impulse Test Voltage (1.2/50  $\mu$ s)  
Rated Frequency  
Primary Rated Current  
Primary Reconnection  
Output for Accuracy Classes  
Rated Short Time Thermal Current I<sub>th</sub> (1s)  
Rated Dynamic Current I<sub>dyn</sub>  
Insulation Class  
Ambient Temperature  
Altitude  
Standard  
Weight

## ADB 12 / ADB12S

12kV  
28kV  
75kV  
50Hz, 60Hz  
10-2500A  
2x10A-2x600A  
1A, 5A  
Max. (60kA, 1000In)  
2.5xI<sub>th</sub>, max. 120kA  
E  
-5.....+40 °C  
1000m  
TS, IEC, VDE, ANSI  
28kg

**PIFFNER**

➤ true values



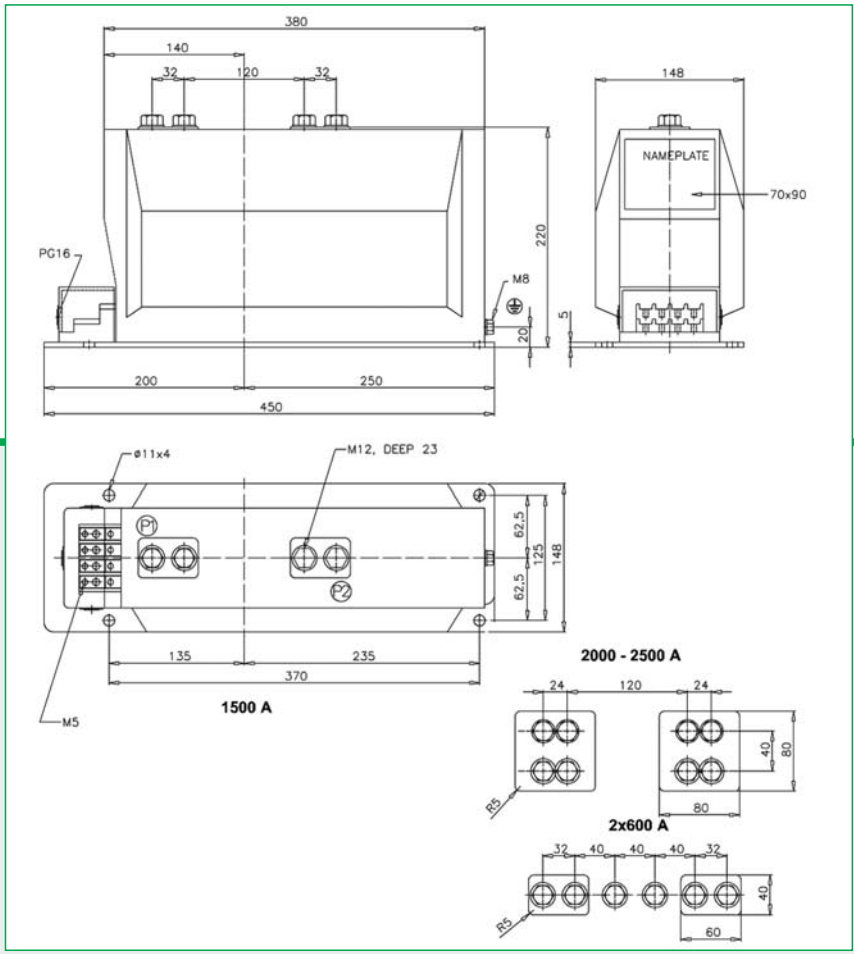


# Indoor Current Transformers

## ADC 12

## ADC 12 S

Current Transformer  
 Block type  
 Epoxy resin insulation  
 Indoor  
 DIN 42600 compatible



### Indications for the ordering

- Type designation
- Nominal primary current
- Nominal secondary current
- Frequency
- Nominal output
- Accuracy class
- Short-time thermal current

### TECHNICAL DATA

Max. Operating Voltage, kV	12kV
Rated Power Freq. Withstand Voltage (1 min)	28kV
Rated Impulse Test Voltage (1.2/50 μs)	75kV
Rated Frequency	50Hz, 60Hz
Primary Rated Current	10-2500A
Primary Reconnection	2x10A-2x600A
Output for Accuracy Classes	1A, 5A
Rated Short Time Thermal Current I <sub>th</sub> (1s)	Max. (60kA, 1000In)
Rated Dynamic Current I <sub>dyn</sub>	2.5xI <sub>th</sub> , max. 120kA
Insulation Class	E
Ambient Temperature	-5.....+40 °C
Altitude	1000m
Standard	TS, IEC, VDE, ANSI
Weight	35kg

# Indoor Current Transformers

**ADD 12**  
**ADD 12 S**



+ true values



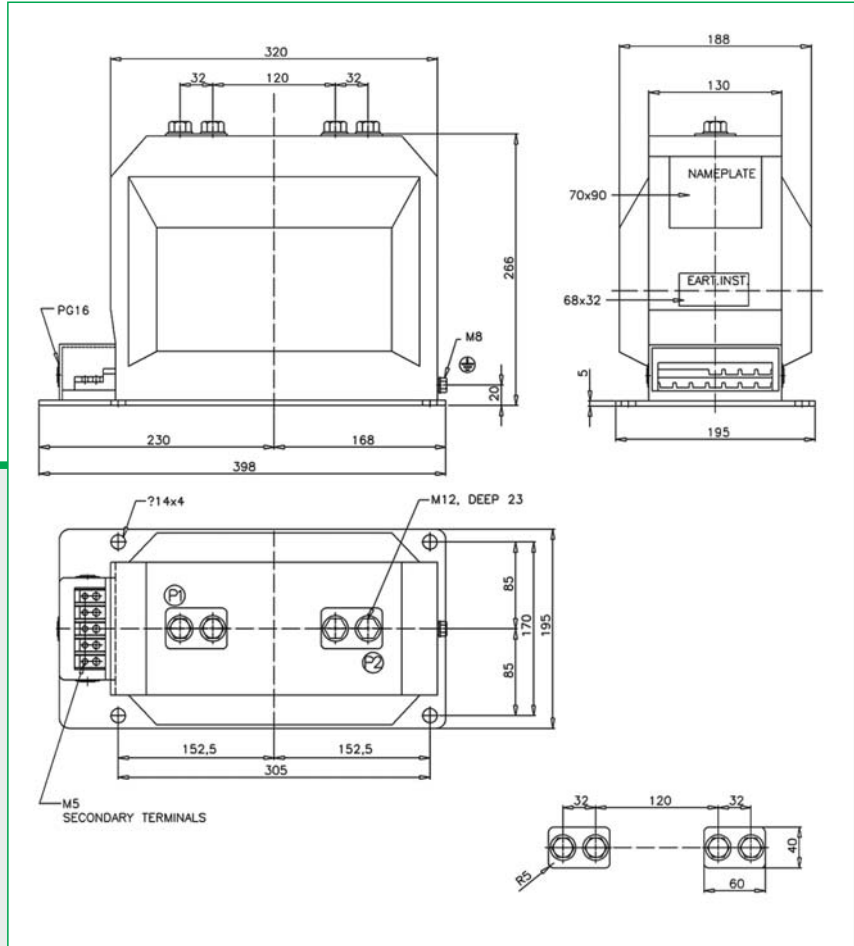
Current Transformer  
Block type  
Epoxy resin insulation  
Indoor  
DIN 42600 compatible

### Indications for the ordering

- Type designation
- Nominal primary current
- Nominal secondary current
- Frequency
- Nominal output
- Accuracy class
- Short-time thermal current

### TECHNICAL DATA

Max. Operating Voltage, kV	12kV
Rated Power Freq. Withstand Voltage (1 min)	28kV
Rated Impulse Test Voltage (1.2/50 μs)	75kV
Rated Frequency	50Hz, 60Hz
Primary Rated Current	10-3600A
Primary Reconnection	2x10A-2x600A
Output for Accuracy Classes	1A, 5A
Rated Short Time Thermal Current I <sub>th</sub> (1s)	Max.(60kA, 1000I <sub>n</sub> )
Rated Dynamic Current I <sub>dyn</sub>	2.5xI <sub>th</sub> , max. 120kA
Insulation Class	E
Ambient Temperature	-5.....+40 °C
Altitude	1000m
Standard	TS, IEC, VDE, ANSI
Weight	35kg

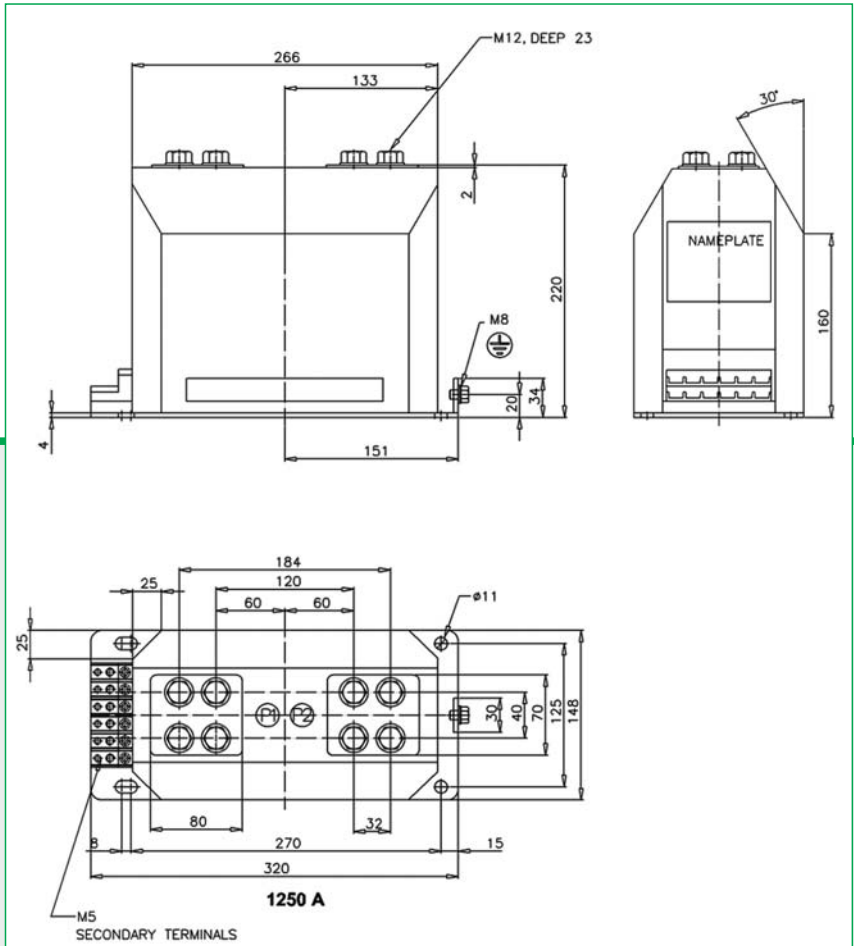


# Indoor Current Transformers

## ADE 12

## ADE 12 S

Current Transformer  
 Block type  
 Epoxy resin insulation  
 Indoor  
 DIN 42600 compatible



### Indications for the ordering

- Type designation
- Nominal primary current
- Nominal secondary current
- Frequency
- Nominal output
- Accuracy class
- Short-time thermal current

### TECHNICAL DATA

Max. Operating Voltage, kV	12kV
Rated Power Freq. Withstand Voltage (1 min)	28kV
Rated Impulse Test Voltage (1.2/50 μs)	75kV
Rated Frequency	50Hz, 60Hz
Primary Rated Current	10-2500A
Primary Reconnection	2x10A-2x600A
Output for Accuracy Classes	1A, 5A
Rated Short Time Thermal Current I <sub>th</sub> (1s)	Max.(60kA, 1000In)
Rated Dynamic Current I <sub>dyn</sub>	2.5xI <sub>th</sub> , max. 120kA
Insulation Class	E
Ambient Temperature	-5.....+40 °C
Altitude	1000m
Standard	TS, IEC, VDE, ANSI
Weight	35kg

# Indoor Current Transformers

## ADF 12

## ADF 12 S



Current Transformer  
Block type  
Epoxy resin insulation  
Indoor  
DIN 42600 compatible

### Indications for the ordering

- Type designation
- Nominal primary current
- Nominal secondary current
  - Frequency
- Nominal output
- Accuracy class
- Short-time thermal current

### TECHNICAL DATA

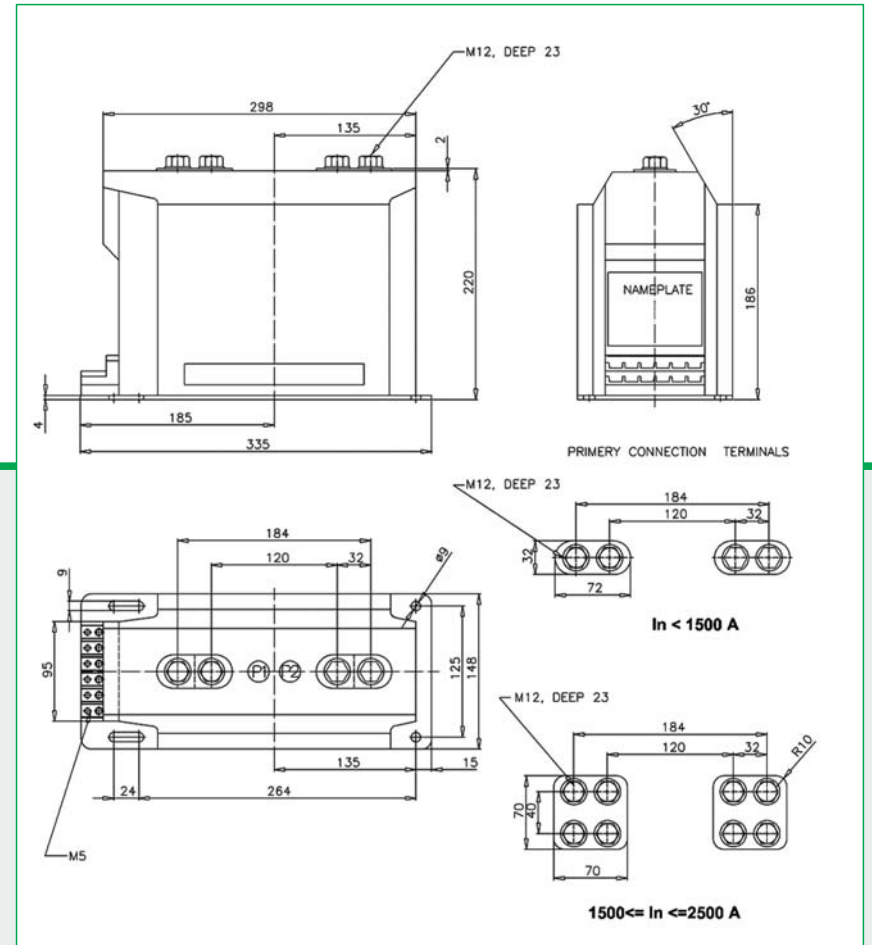
Max. Operating Voltage, kV  
Rated Power Freq. Withstand Voltage (1 min)  
Rated Impulse Test Voltage (1.2/50  $\mu$ s)  
Rated Frequency  
Primary Rated Current  
Primary Reconnection  
Output for Accuracy Classes  
Rated Short Time Thermal Current  $I_{th}$  (1s)  
Rated Dynamic Current  $I_{dyn}$   
Insulation Class  
Ambient Temperature  
Altitude  
Standard  
Weight

### ADF 12 / ADF 12 S

12kV  
28kV  
75kV  
50Hz, 60Hz  
10-2500A  
2x10A-2x600A  
1A, 5A  
Max. (60kA, 1000 $I_n$ )  
2.5x $I_{th}$ , max. 120kA  
E  
-5.....+40 °C  
1000m  
TS, IEC, VDE, ANSI  
30kg

**PIFFNER**

True values

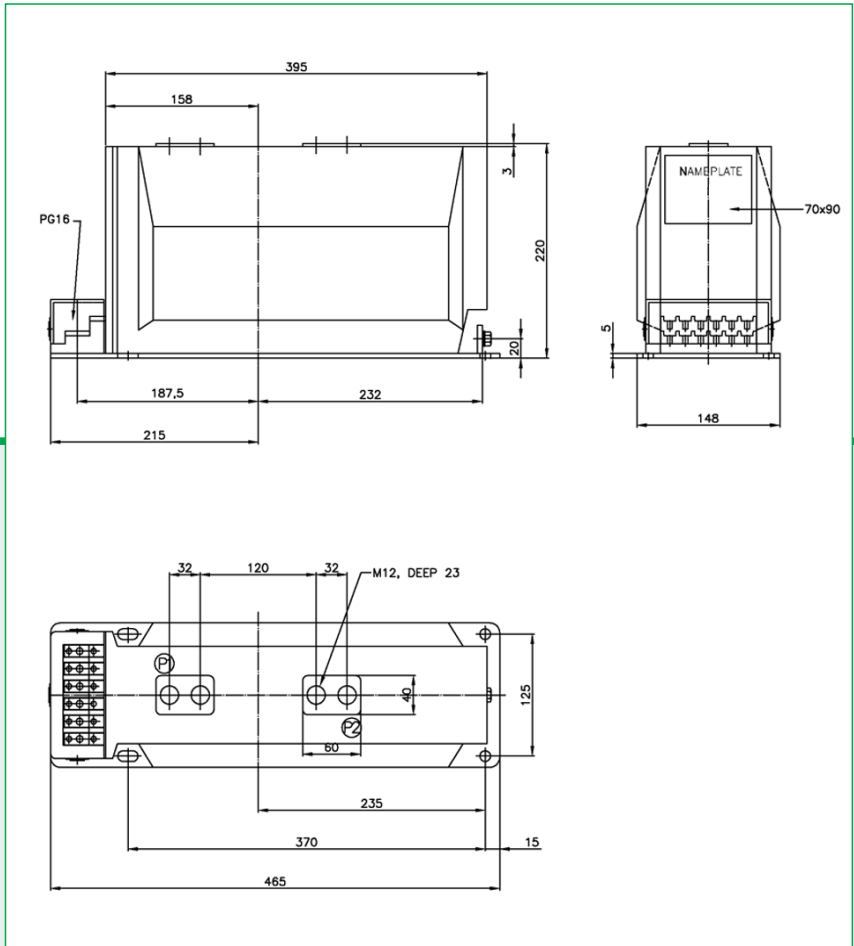


# Indoor Current Transformers

## ADG 12

## ADG 12 S

Current Transformer  
 Block type  
 Epoxy resin insulation  
 Indoor  
 DIN 42600 compatible



### Indications for the ordering

- Type designation
- Nominal primary current
- Nominal secondary current
- Frequency
- Nominal output
- Accuracy class
- Short-time thermal current

### TECHNICAL DATA

Max. Operating Voltage, kV  
 Rated Power Freq. Withstand Voltage (1 min)  
 Rated Impulse Test Voltage (1.2/50 μs)  
 Rated Frequency  
 Primary Rated Current  
 Primary Reconnection  
 Output for Accuracy Classes  
 Rated Short Time Thermal Current I<sub>th</sub> (1s)  
 Rated Dynamic Current I<sub>dyn</sub>  
 Insulation Class  
 Ambient Temperature  
 Altitude  
 Standard  
 Weight

### ADG 12 / ADG 12S

12kV  
 28kV  
 75kV  
 50Hz, 60Hz  
 10-2500A  
 2x10A-2x600A  
 1A, 5A  
 Max. (60kA, 1000In)  
 2.5xI<sub>th</sub>, max. 120kA  
 E  
 -5.....+40 °C  
 1000m  
 TS, IEC, VDE, ANSI  
 35kg

# Indoor Current Transformers

## ADA 24 ADA 24 S



Current Transformer  
Block type  
Epoxy resin insulation  
Indoor  
DIN 42600 compatible

### Indications for the ordering

- Type designation
- Nominal primary current
- Nominal secondary current
  - Frequency
  - Nominal output
  - Accuracy class
- Short-time thermal current

### TECHNICAL DATA

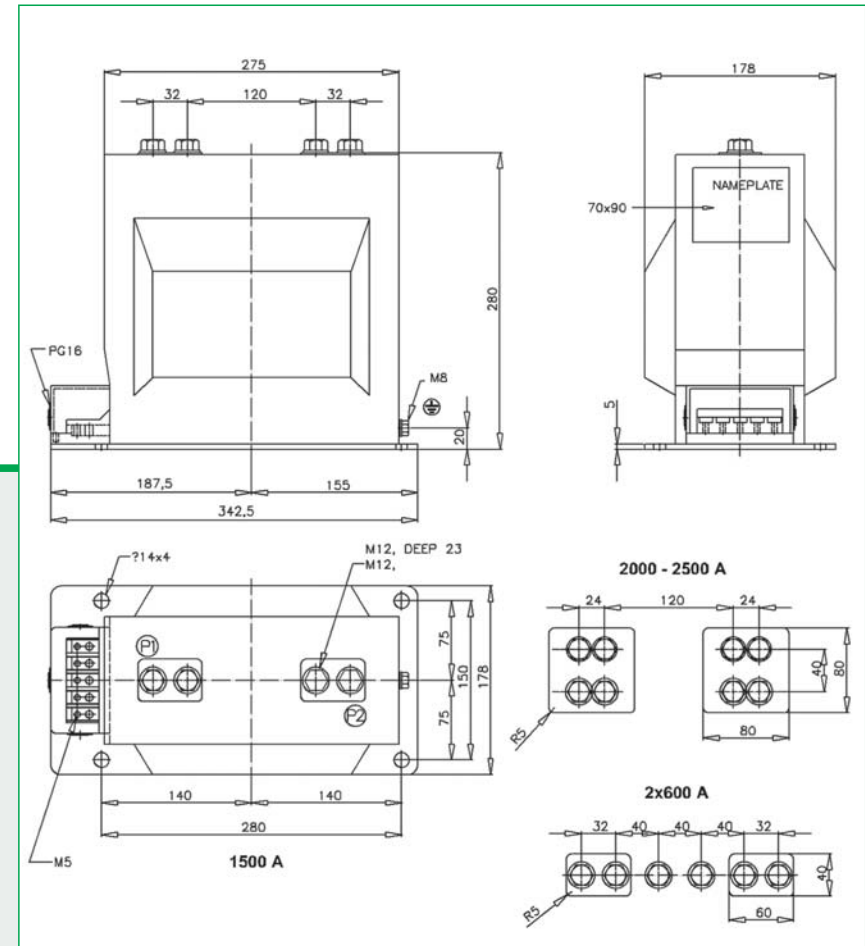
Max. Operating Voltage, kV  
Rated Power Freq. Withstand Voltage (1 min)  
Rated Impulse Test Voltage (1.2/50  $\mu$ s)  
Rated Frequency  
Primary Rated Current  
Primary Reconnection  
Output for Accuracy Classes  
Rated Short Time Thermal Current I<sub>th</sub> (1s)  
Rated Dynamic Current I<sub>dyn</sub>  
Insulation Class  
Ambient Temperature  
Altitude  
Standard  
Weight

### ADA 24 / ADA 24 S

24kV  
50kV  
125kV  
50Hz, 60Hz  
10-2500A  
2x10A-2x600A  
1A, 5A  
Max. (50kA, 1000In)  
2.5xI<sub>th</sub>, max. 120kA  
E  
-5.....+40 °C  
1000m  
TS, IEC, VDE, ANSI  
34kg

**PFIFFNER**

➤ true values



# Indoor Current Transformers

## ADB 24

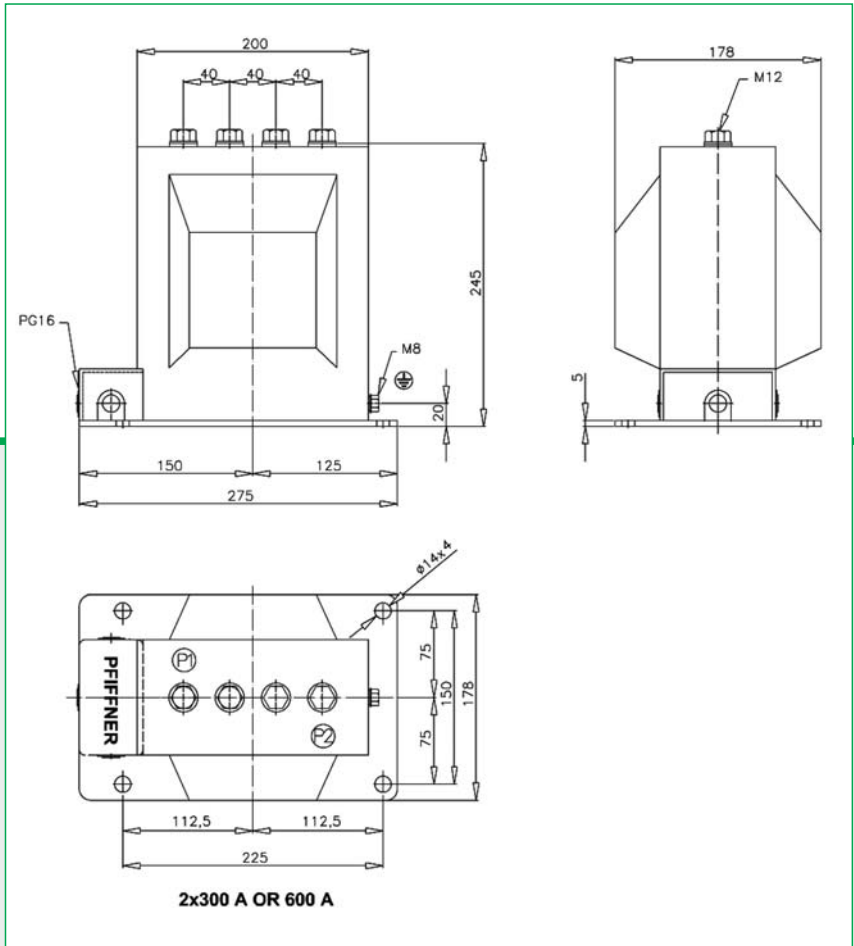
## ADB 24 S

Current Transformer  
 Block type  
 Epoxy resin insulation  
 Indoor  
 DIN 42600 compatible



### Indications for the ordering

- Type designation
- Nominal primary current
- Nominal secondary current
- Frequency
- Nominal output
- Accuracy class
- Short-time thermal current



### TECHNICAL DATA

Max. Operating Voltage, kV	24kV
Rated Power Freq. Withstand Voltage (1 min)	50kV
Rated Impulse Test Voltage (1.2/50 μs)	125kV
Rated Frequency	50Hz, 60Hz
Primary Rated Current	10-2500A
Primary Reconnection	2x10A-2x600A
Output for Accuracy Classes	1A, 5A
Rated Short Time Thermal Current I <sub>th</sub> (1s)	Max. (50kA, 1000I <sub>n</sub> )
Rated Dynamic Current I <sub>dyn</sub>	2.5xI <sub>th</sub> , max. 120kA
Insulation Class	E
Ambient Temperature	-5.....+40 °C
Altitude	1000m
Standard	TS, IEC, VDE, ANSI
Weight	34kg

### ADB 24 / ADB 24 S

# Indoor Current Transformers

ADC 24  
ADC 24 S



Current Transformer  
Block type  
Epoxy resin insulation  
Indoor  
DIN 42600 compatible

## Indications for the ordering

- Type designation
- Nominal primary current
- Nominal secondary current
  - Frequency
  - Nominal output
  - Accuracy class
- Short-time thermal current

## TECHNICAL DATA

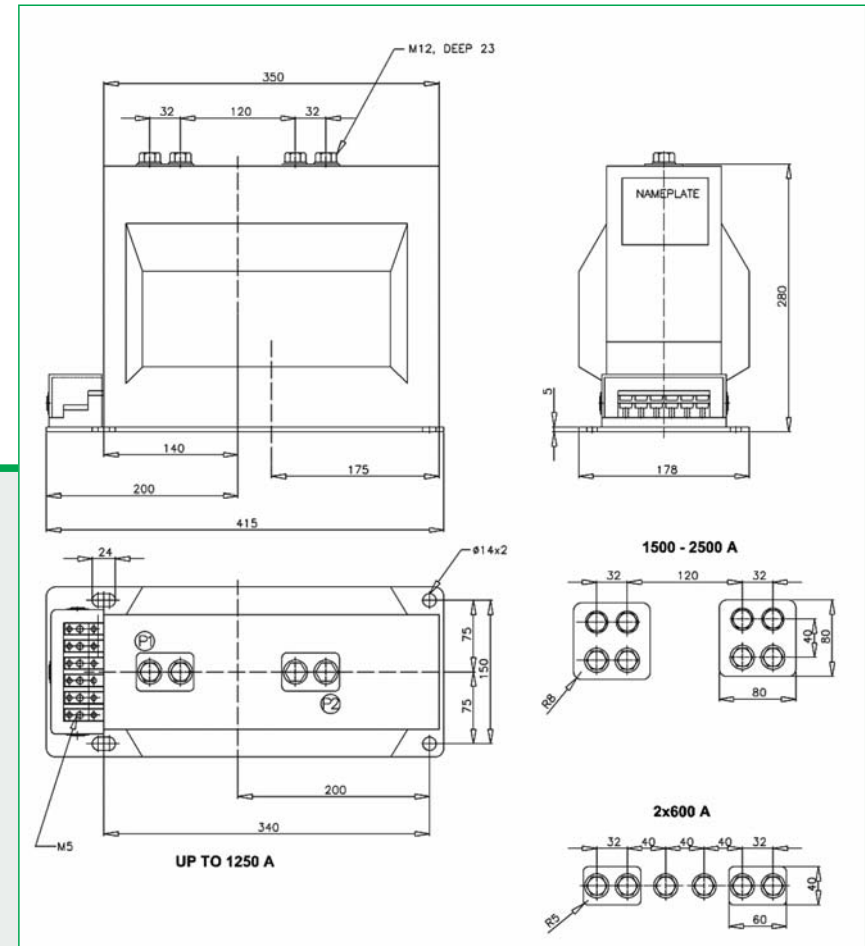
Max. Operating Voltage, kV  
Rated Power Freq. Withstand Voltage (1 min)  
Rated Impulse Test Voltage (1.2/50  $\mu$ s)  
Rated Frequency  
Primary Rated Current  
Primary Reconnection  
Output for Accuracy Classes  
Rated Short Time Thermal Current I<sub>th</sub> (1s)  
Rated Dynamic Current I<sub>dyn</sub>  
Insulation Class  
Ambient Temperature  
Altitude  
Standard  
Weight

## ADC 24 / ADC 24 S

24kV  
50kV  
125kV  
50Hz, 60Hz  
10-2500A  
2x10A-2x600A  
Max. (50kA, 1000In)  
2.5xI<sub>th</sub>, max. 120kA  
E  
-5.....+40 °C  
1000m  
TS, IEC, VDE, ANSI  
34kg

PIFFNER

+ true values





# Indoor Current Transformers

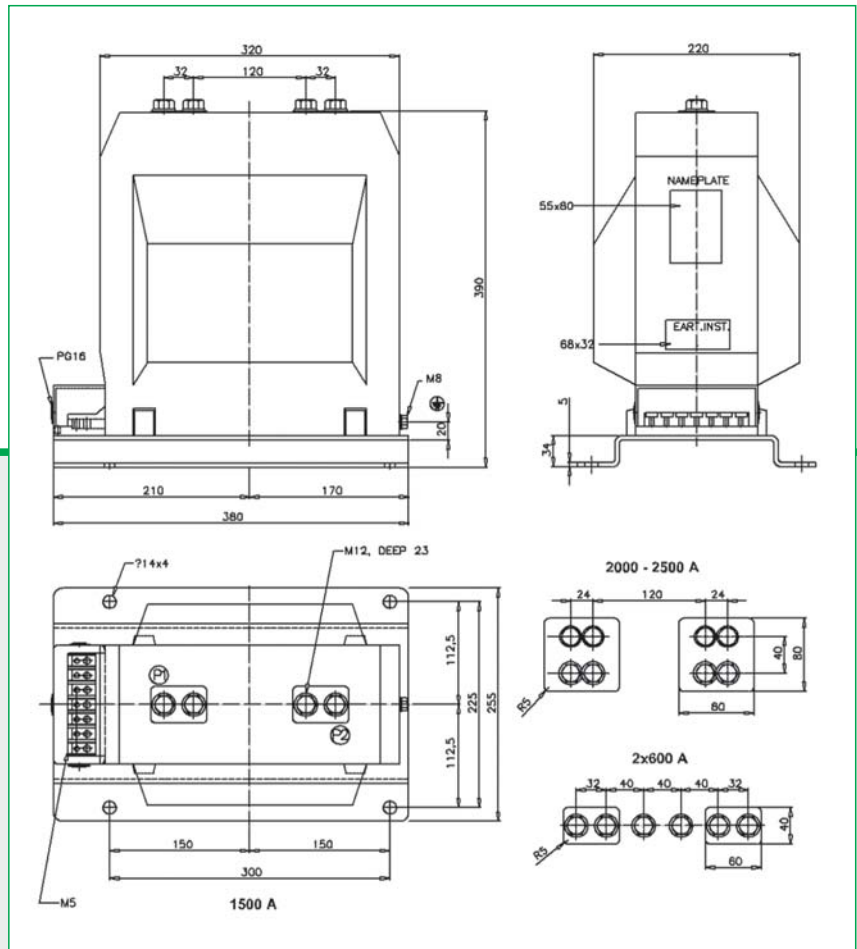
## ADA 36

## ADA 36 S

Current Transformer  
 Block type  
 Epoxy resin insulation  
 Indoor  
 DIN 42600 compatible

### Indications for the ordering

- Type designation
- Nominal primary current
- Nominal secondary current
- Frequency
- Nominal output
- Accuracy class
- Short-time thermal current



### TECHNICAL DATA

Max. Operating Voltage, kV  
 Rated Power Freq. Withstand Voltage (1 min)  
 Rated Impulse Test Voltage (1.2/50  $\mu$ s)  
 Rated Frequency  
 Primary Rated Current  
 Primary Reconnection  
 Output for Accuracy Classes  
 Rated Short Time Thermal Current I<sub>th</sub> (1s)  
 Rated Dynamic Current I<sub>dyn</sub>  
 Insulation Class  
 Ambient Temperature  
 Altitude  
 Standard  
 Weight

### ADA 36 / ADA 36 S

36kV  
 70kV  
 170kV  
 50Hz, 60Hz  
 10-1500/3600A  
 2x10A-2x600A  
 1A, 5A  
 Max. (50kA, 1000In)  
 2.5xI<sub>th</sub>, max. 120kA  
 E  
 -5.....+40 °C  
 1000m  
 TS, IEC, VDE, ANSI  
 48kg

# Indoor Current Transformers

## ADB 36 ADB 36 S



Current Transformer  
Block type  
Epoxy resin insulation  
Indoor  
DIN 42600 compatible

### Indications for the ordering

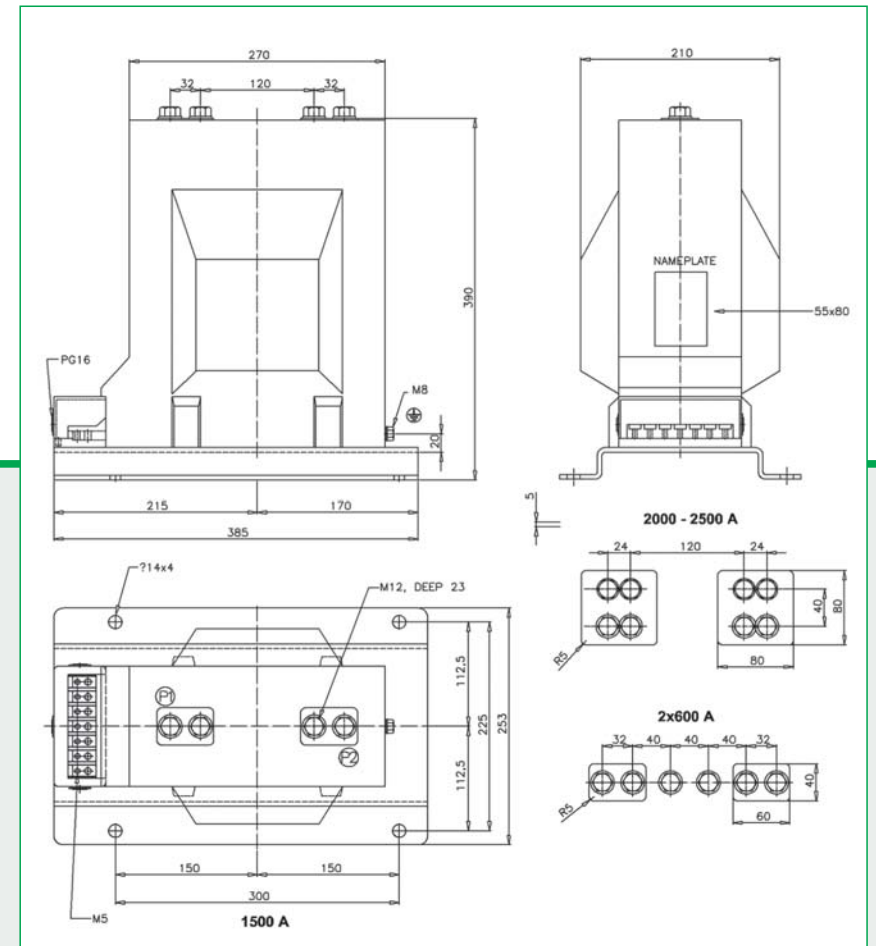
- Type designation
- Nominal primary current
- Nominal secondary current
  - Frequency
- Nominal output
- Accuracy class
- Short-time thermal current

### TECHNICAL DATA

Max. Operating Voltage, kV  
Rated Power Freq. Withstand Voltage (1 min)  
Rated Impulse Test Voltage (1.2/50  $\mu$ s)  
Rated Frequency  
Primary Rated Current  
Primary Reconnection  
Output for Accuracy Classes  
Rated Short Time Thermal Current I<sub>th</sub> (1s)  
Rated Dynamic Current I<sub>dyn</sub>  
Insulation Class  
Ambient Temperature  
Altitude  
Standard  
Weight

### ADB 36 / ADB 36 S

36kV  
70kV  
170kV  
50Hz, 60Hz  
10-1500/2500A  
2x10A-2x600A  
1A, 5A  
Max. (50kA, 1000In)  
2.5xI<sub>th</sub>, max. 120kA  
E  
-5.....+40 °C  
1000m  
TS, IEC, VDE, ANSI  
36kg

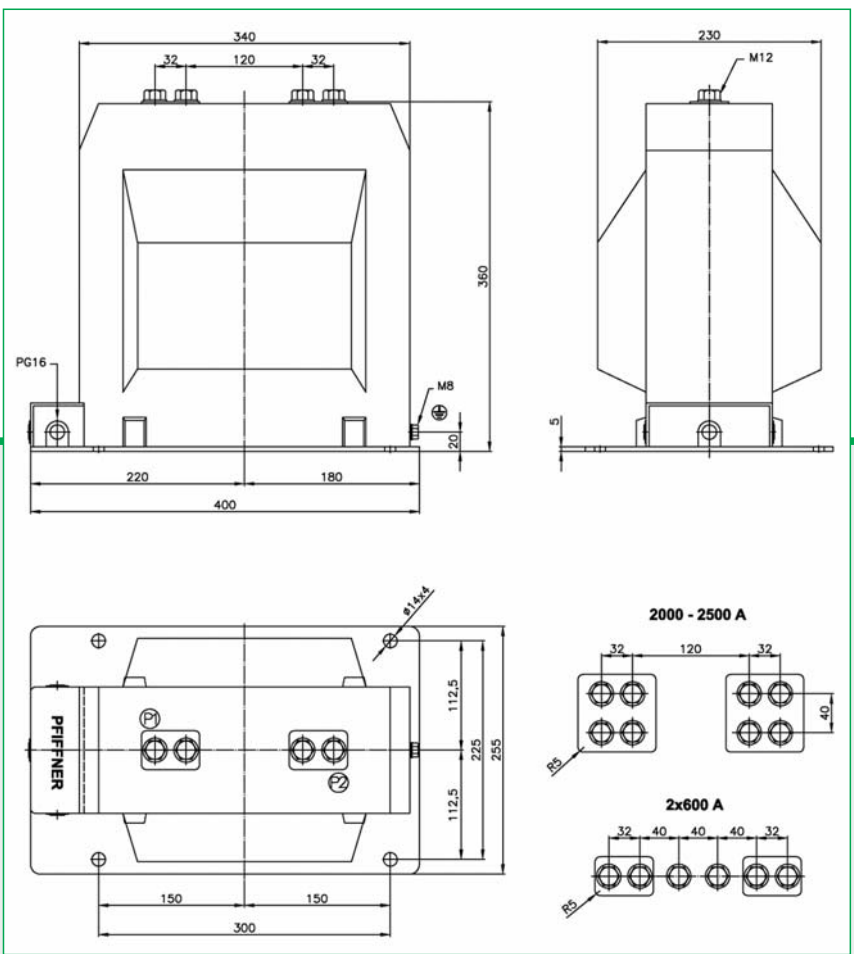


# Indoor Current Transformers

## ADC 36

## ADC 36 S

Current Transformer  
 Block type  
 Epoxy resin insulation  
 Indoor  
 DIN 42600 compatible



### Indications for the ordering

- Type designation
- Nominal primary current
- Nominal secondary current
- Frequency
- Nominal output
- Accuracy class
- Short-time thermal current

### TECHNICAL DATA

Max. Operating Voltage, kV	36kV
Rated Power Freq. Withstand Voltage (1 min)	70kV
Rated Impulse Test Voltage (1.2/50 μs)	170kV
Rated Frequency	50Hz, 60Hz
Primary Rated Current	10-1500/2500A
Primary Reconnection	2x10A-2x600A
Output for Accuracy Classes	1A, 5A
Rated Short Time Thermal Current I <sub>th</sub> (1s)	Max.(50kA, 1000I <sub>n</sub> )
Rated Dynamic Current I <sub>dyn</sub>	2.5xI <sub>th</sub> , max. 120kA
Insulation Class	E
Ambient Temperature	-5.....+40 °C
Altitude	1000m
Standard	TS, IEC, VDE, ANSI
Weight	48kg

# Indoor Current Transformers

**ADD 36**  
**ADD 36 S**

**PFIFFNER**

**+ true values**



Current Transformer  
Block type  
Epoxy resin insulation  
Indoor  
DIN 42600 compatible

### Indications for the ordering

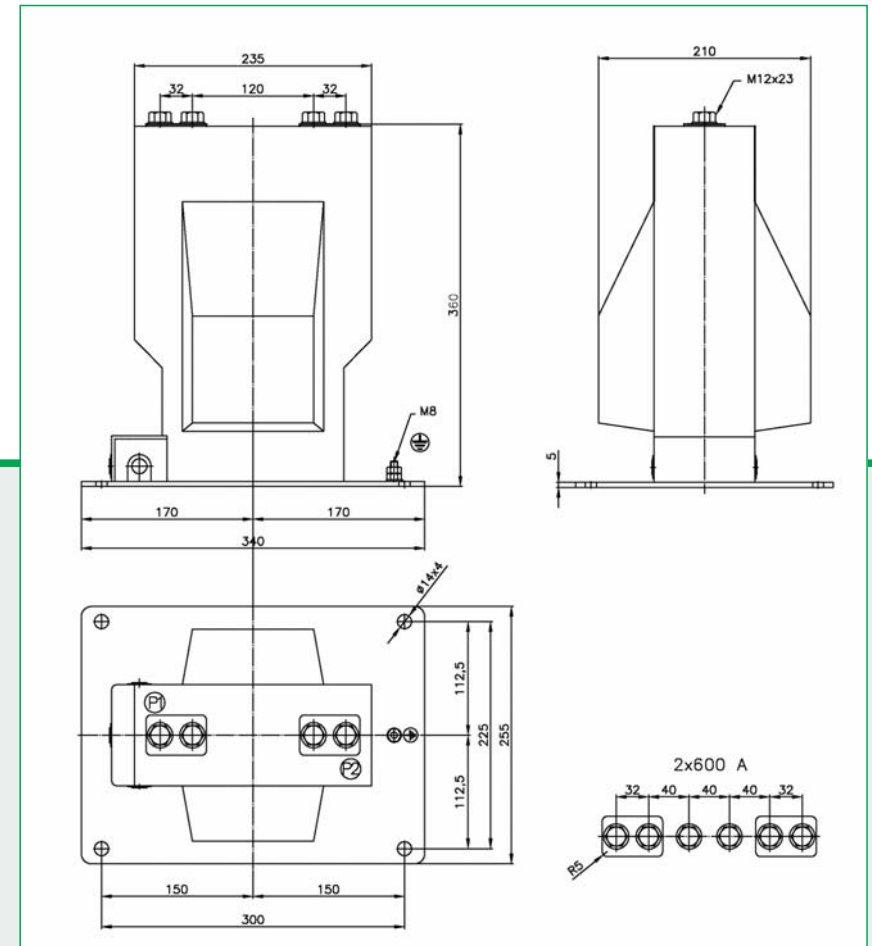
- Type designation
- Nominal primary current
- Nominal secondary current
  - Frequency
- Nominal output
- Accuracy class
- Short-time thermal current

### TECHNICAL DATA

Max. Operating Voltage, kV  
Rated Power Freq. Withstand Voltage (1 min)  
Rated Impulse Test Voltage (1.2/50  $\mu$ s)  
Rated Frequency  
Primary Rated Current  
Primary Reconnection  
Output for Accuracy Classes  
Rated Short Time Thermal Current I<sub>th</sub> (1s)  
Rated Dynamic Current I<sub>dyn</sub>  
Insulation Class  
Ambient Temperature  
Altitude  
Standard  
Weight

### ADD 36 / ADD 36 S

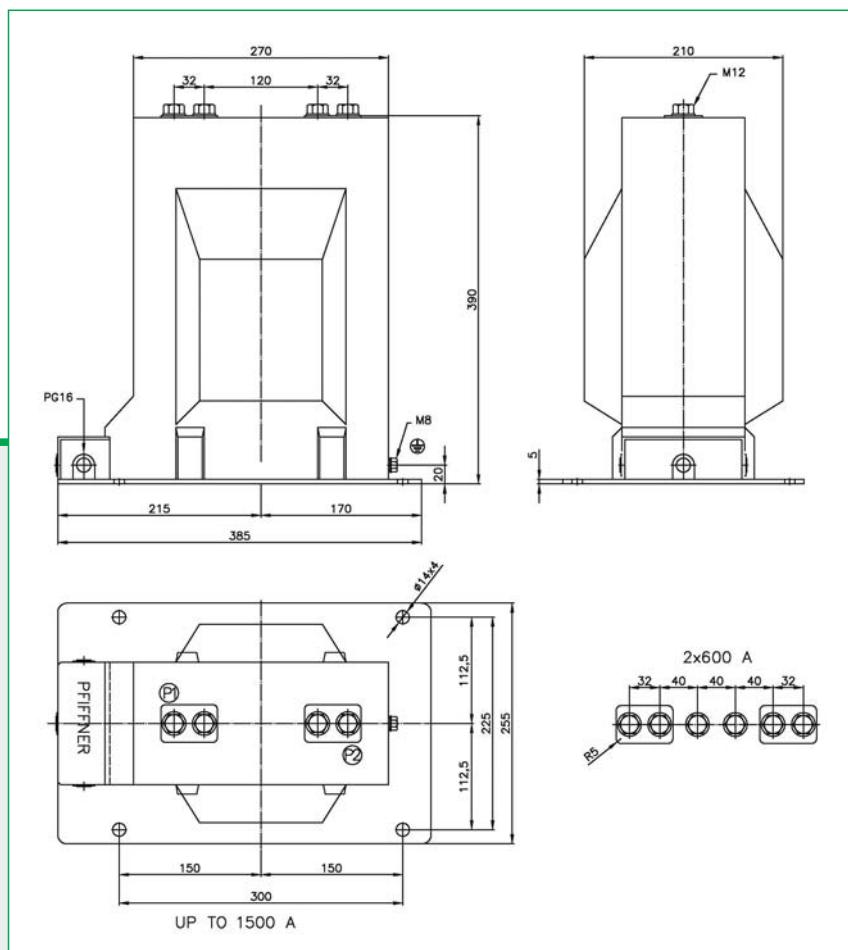
36kV  
70kV  
170kV  
50Hz, 60Hz  
10-1500/2500A  
2x10A-2x600A  
1A, 5A  
Max. (50kA, 1000I<sub>n</sub>)  
2.5xI<sub>th</sub>, max. 120kA  
E  
-5.....+40 °C  
1000m  
TS, IEC, VDE, ANSI  
36kg



# Indoor Current Transformers

## ADE 36 ADE 36 S

Current Transformer  
Block type  
Epoxy resin insulation  
Indoor  
DIN 42600 compatible



### Indications for the ordering

- Type designation
- Nominal primary current
- Nominal secondary current
- Frequency
- Nominal output
- Accuracy class
- Short-time thermal current

### TECHNICAL DATA

Max. Operating Voltage, kV  
Rated Power Freq. Withstand Voltage (1 min)  
Rated Impulse Test Voltage (1.2/50  $\mu$ s)  
Rated Frequency  
Primary Rated Current  
Primary Reconnection  
Output for Accuracy Classes  
Rated Short Time Thermal Current  $I_{th}$  (1s)  
Rated Dynamic Current  $I_{dyn}$   
Insulation Class  
Ambient Temperature  
Altitude  
Standard  
Weight

### ADE 36 / ADE 36 S

36kV  
70kV  
170kV  
50Hz, 60Hz  
10-1500/2500A  
2x10A-2x600A  
1A, 5A  
Max.(50kA, 1000In)  
2.5xI<sub>th</sub>, max. 120kA  
E  
-5.....+40 °C  
1000m  
TS, IEC, VDE, ANSI  
48kg

# Indoor Current Transformers

## RCT-A

**PIFFNER**

± true values



Current Transformer  
Ring type  
Low voltage insulation  
Indoor

### Indications for the ordering

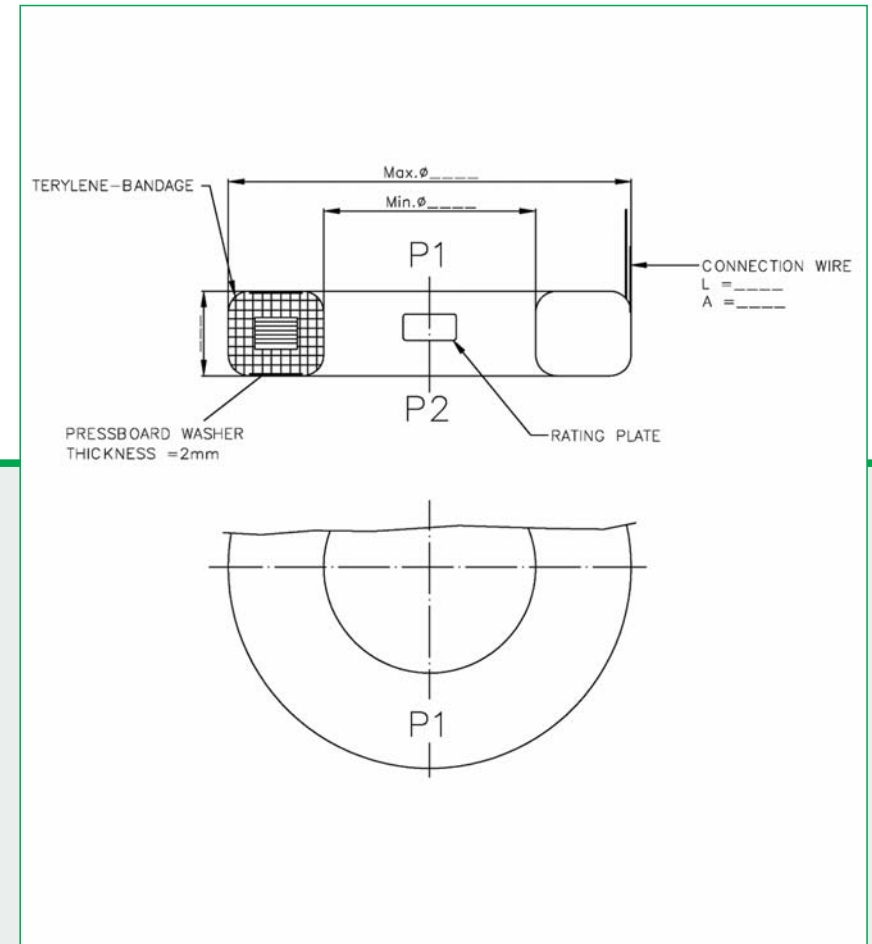
- Type designation
- Nominal primary current
- Nominal secondary current
  - Frequency
  - Nominal output
  - Accuracy class
- Short-time thermal current

### TECHNICAL DATA

Max. Operating Voltage, kV  
 Rated Power Freq. Withstand Voltage (1 min)  
 Rated Impulse Test Voltage (1.2/50  $\mu$ s)  
 Rated Frequency  
 Primary Rated Current  
 Primary Reconnection  
 Output for Accuracy Classes  
 Rated Short Time Thermal Current I<sub>th</sub> (1s)  
 Rated Dynamic Current I<sub>dyn</sub>  
 Insulation Class  
 Ambient Temperature  
 Altitude  
 Standard  
 Weight

### RCT-A

0.72 kV  
 3 kV  
 -  
 50Hz, 60Hz  
 Up to 10.000 A  
 -  
 1A, 5A  
 10kA/1s  
 2.5xI<sub>th</sub>....  
 E  
 -5.....+40 C  
 1000m  
 TS, IEC, VDE, ANSI  
 Depends on the size



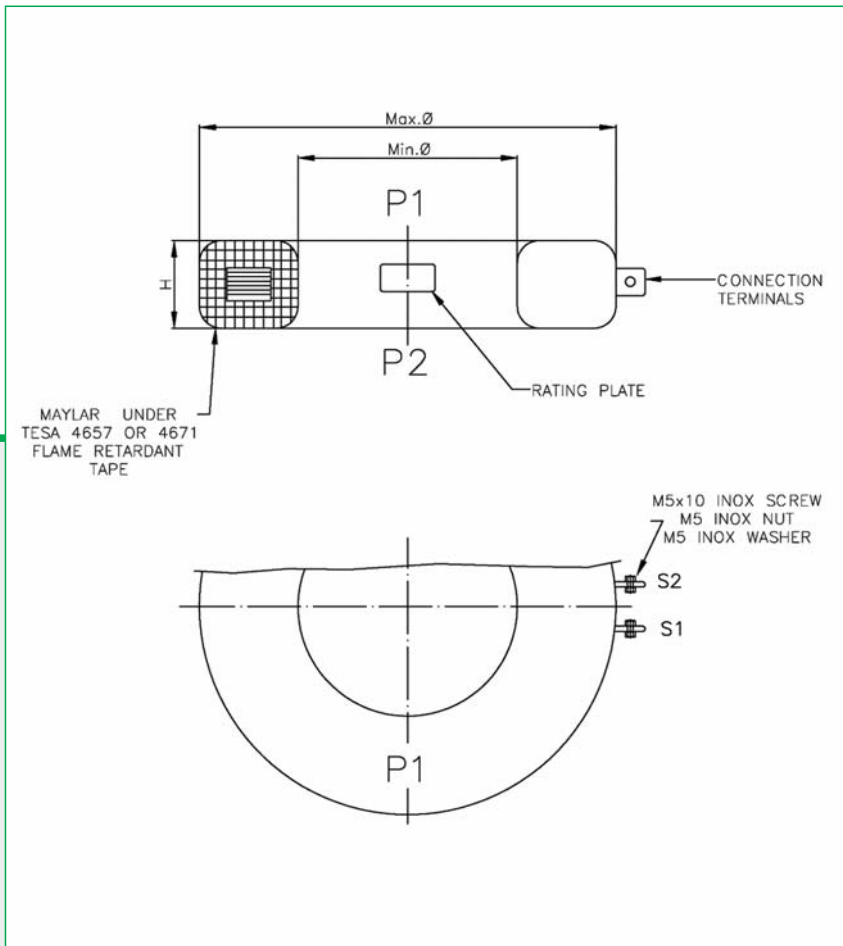
# Indoor Current Transformers

## RCT-B

Current Transformer  
 Ring type  
 Low voltage insulation  
 Indoor

### Indications for the ordering

- Type designation
- Nominal primary current
- Nominal secondary current
- Frequency
- Nominal output
- Accuracy class
- Short-time thermal current



### TECHNICAL DATA

	<b>RCT-B</b>
Max. Operating Voltage, kV	0.72 kV
Rated Power Freq. Withstand Voltage (1 min)	3 kV
Rated Impulse Test Voltage (1.2/50 µs)	-
Rated Frequency	50Hz, 60Hz
Primary Rated Current	Up to 10.000 A
Primary Reconnection	-
Output for Accuracy Classes	1A, 5A
Rated Short Time Thermal Current I <sub>th</sub> (1s)	10kA/1s
Rated Dynamic Current I <sub>dyn</sub>	2.5xI <sub>th</sub> ....
Insulation Class	E
Ambient Temperature	-5.....+40 C
Altitude	1000m
Standard	TS, IEC, VDE, ANSI
Weight	Depends on the size

# Indoor Current Transformers

## RCTK-75

**PIFFNER**

+ true values

Current Transformer  
Ring type  
PU resin insulation  
Indoor

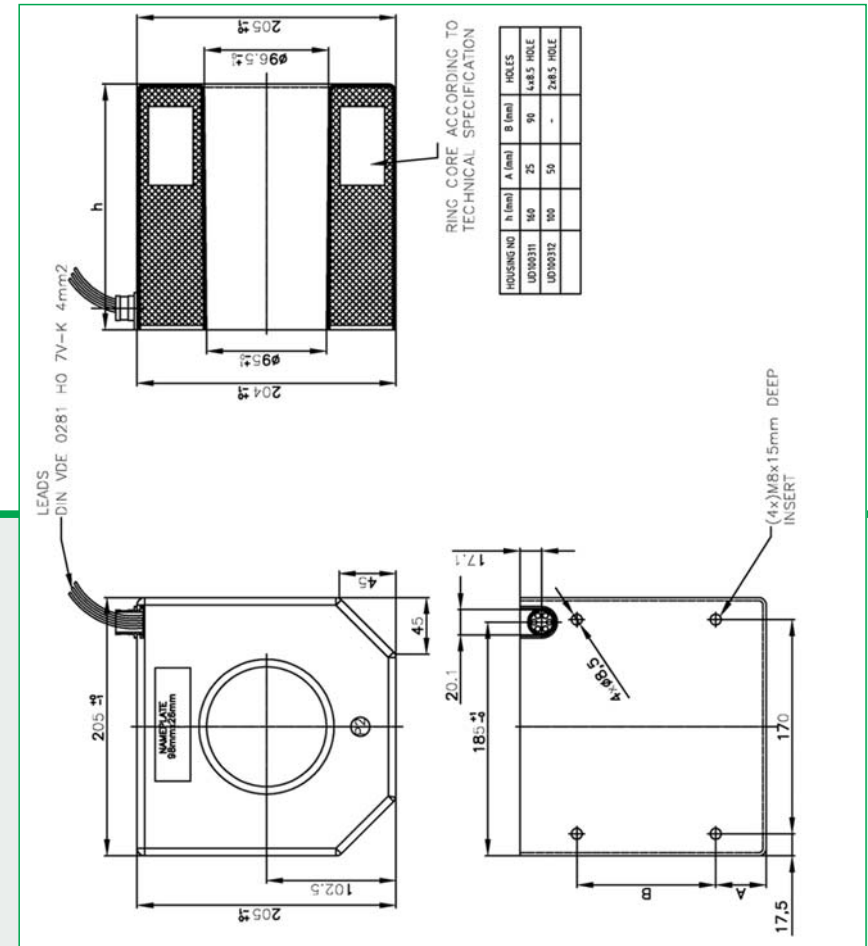


### Indications for the ordering

- Type designation
- Nominal primary current
- Nominal secondary current
  - Frequency
  - Nominal output
  - Accuracy class
- Short-time thermal current

### TECHNICAL DATA

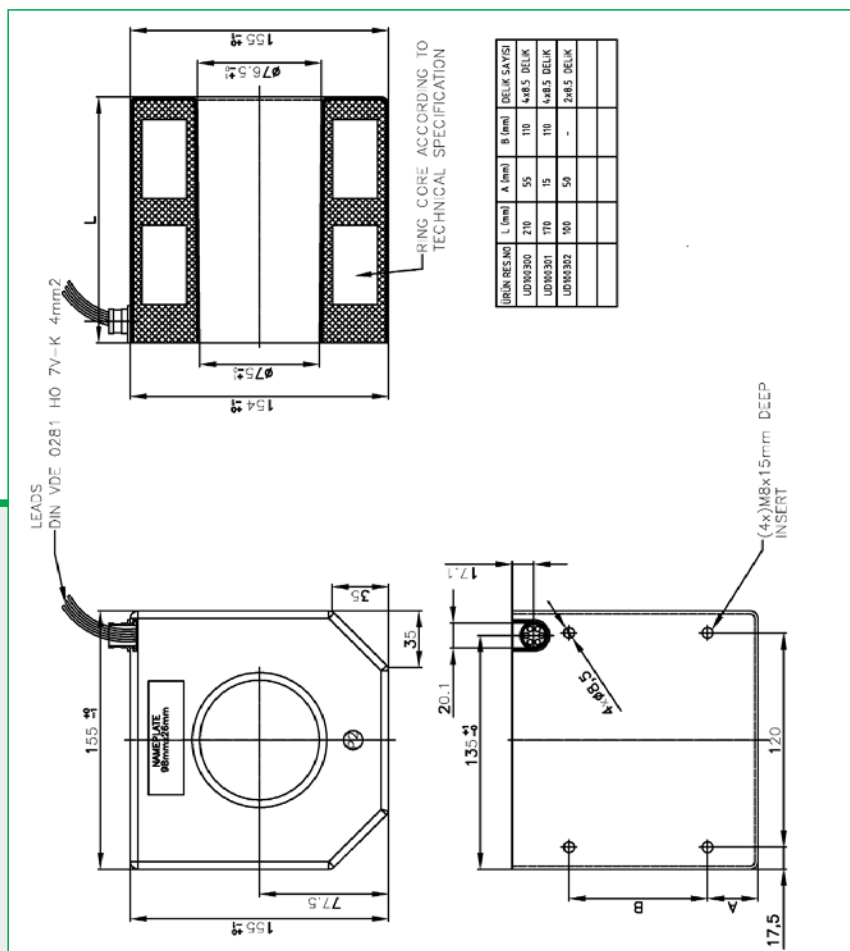
	<b>RCTK-75</b>
Max. Operating Voltage, kV	0.72 kV
Rated Power Freq. Withstand Voltage (1 min)	3 kV
Rated Impulse Test Voltage (1.2/50 μs)	-
Rated Frequency	50Hz, 60Hz
Primary Rated Current	Up to 10.000 A
Primary Reconnection	-
Output for Accuracy Classes	1A, 5A
Rated Short Time Thermal Current I <sub>th</sub> (1s)	100xI <sub>n</sub> /1s
Rated Dynamic Current I <sub>dyn</sub>	2.5xI <sub>th</sub> ....
Insulation Class	E
Ambient Temperature	-5.....+40 C
Altitude	1000m
Standard	TS, IEC, VDE, ANSI
Weight	Depends on the size





# Indoor Current Transformers RCTK-95

Current Transformer  
Ring type  
PU resin insulation  
Indoor



## Indications for the ordering

- Type designation
- Nominal primary current
- Nominal secondary current
- Frequency
- Nominal output
- Accuracy class
- Short-time thermal current

## TECHNICAL DATA

Max. Operating Voltage, kV  
Rated Power Freq. Withstand Voltage (1 min)  
Rated Impulse Test Voltage (1.2/50  $\mu$ s)  
Rated Frequency  
Primary Rated Current  
Primary Reconnection  
Output for Accuracy Classes  
Rated Short Time Thermal Current I<sub>th</sub> (1s)  
Rated Dynamic Current I<sub>dyn</sub>  
Insulation Class  
Ambient Temperature  
Altitude  
Standard  
Weight

## RCTK-95

0.72 kV  
3 kV  
-  
50Hz, 60Hz  
Up to 10.000 A  
-  
1A, 5A  
100xI<sub>n</sub>/1s  
2.5xI<sub>th</sub>....  
E  
-5.....+40 C  
1000m  
TS, IEC, VDE, ANSI  
Depends on the size

# Indoor Current Transformers

## ZCT

**PIFFNER**

+ true values



Current Transformer  
Ring type  
PU resin insulation  
Indoor

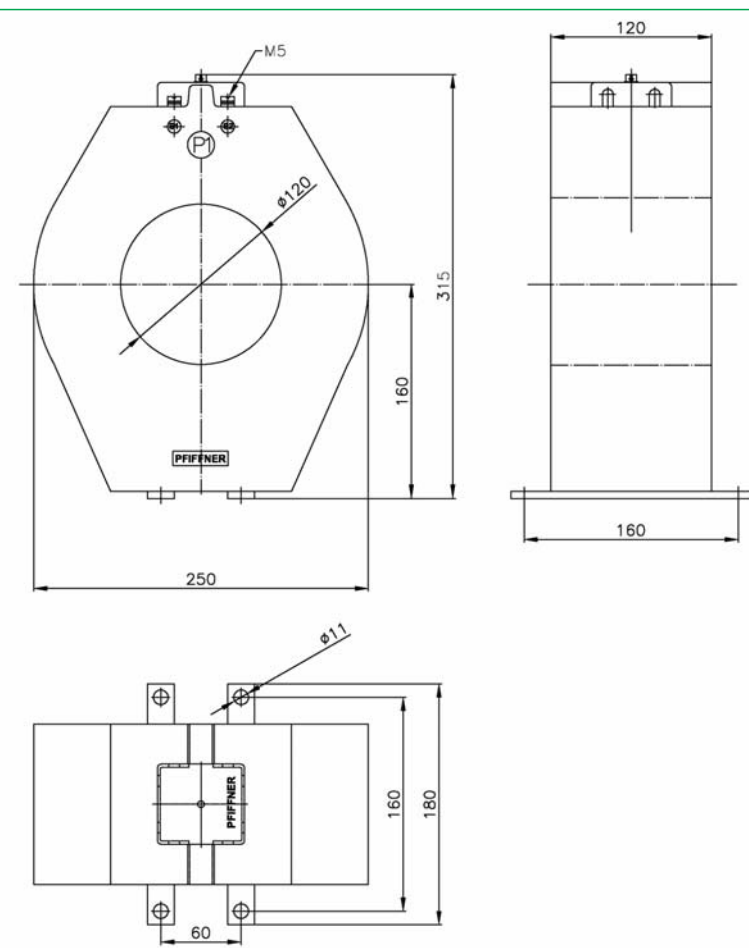
### Indications for the ordering

- Type designation
- Nominal primary current
- Nominal secondary current
  - Frequency
- Nominal output
  - Accuracy class
- Short-time thermal current

### TECHNICAL DATA

Max. Operating Voltage,kV	0.72 kV
Rated Power Freq. Withstand Voltage (1 min)	3 kV
Rated Impulse Test Voltage (1.2/50 $\mu$ s)	-
Rated Frequency	50Hz,60Hz
Primary Rated Current	Up to 10.000 A
Primary Reconnection	-
Output for Accuracy Classes	1A,5A
Rated Short Time Thermal Current I <sub>th</sub> (1s)	100xI <sub>n</sub> /1s
Rated Dynamic Current I <sub>dyn</sub>	2.5xI <sub>th</sub> ....
Insulation Class	E
Ambient Temperature	-5.....+40 C
Altitude	1000m
Standard	TS,IEC,VDE,ANSI
Weight	Depends on the size

### ZCT



# Support Type Single Pole Indoor Voltage Transformers

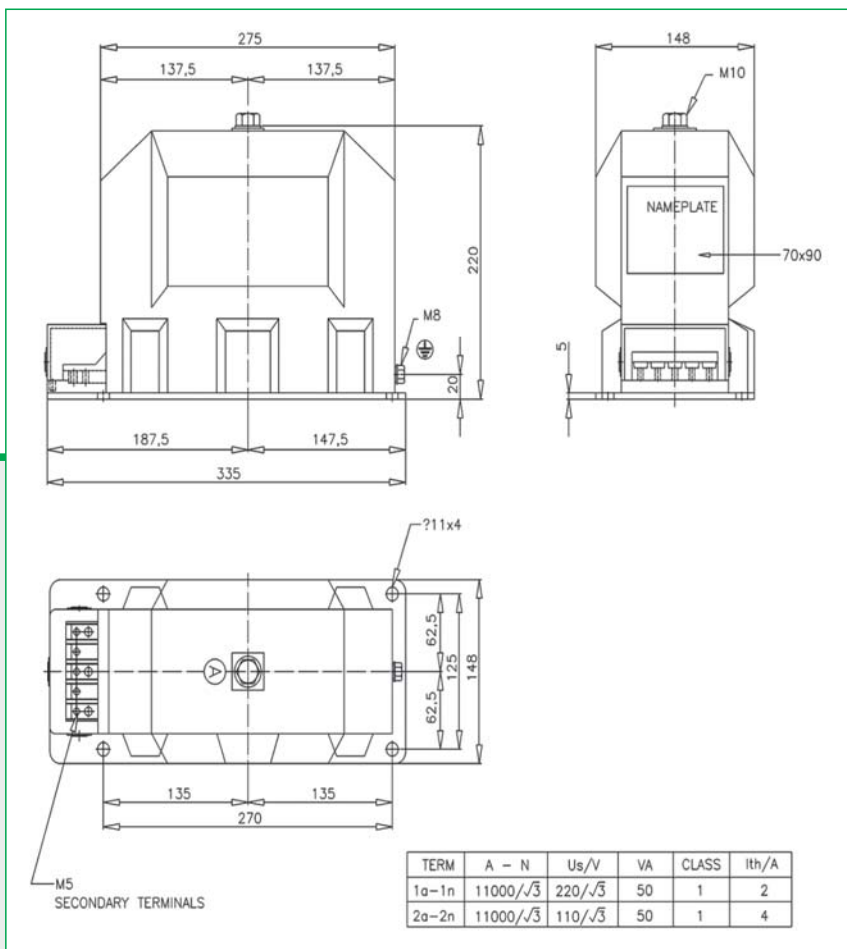
## GDA 12

## GDA 12 S

Voltage Transformer  
 Block type  
 Epoxy resin insulation  
 Indoor  
 DIN 42600 compatible

### Indications for the ordering

- Type designation
- Nominal primary voltages
- Nominal secondary voltages
- Frequency
- Nominal output
- Accuracy class
- Rated voltage factor
- Thermal burden



### TECHNICAL DATA

Max. Operating Voltage, kV  
 Rated Power Freq. Withstand Voltage (1 min)  
 Rated Impulse Test Voltage (1.2/50 μs)  
 Rated Frequency  
 Primary Rated Voltage  
 Rated Thermal Limiting Output  
 Output for Accuracy Classes  
 Rated Burdens and Classes

### GDA 12 / GDA 12 S

12kV  
 28kV  
 75kV  
 50Hz, 60Hz  
 11/√3 kV  
 350 VA  
 100/√3, 110/√3, 120/√3  
 0.2 20 VA  
 0.5 50 VA  
 1.0 100 VA

Rated Burden for Protection Class 3P  
 Voltage Factor (8h)  
 Insulation Class  
 Ambient Temperature  
 Altitude  
 Standard  
 Weight

60 VA  
 1.9  
 E  
 -5.....+40 °C  
 1000m  
 TS, IEC, VDE, ANSI  
 24kg

# Support Type Double Pole Indoor Voltage Transformers

**GDB 12**  
**GDB 12 S**



Voltage Transformer  
Block type  
Epoxy resin insulation  
Indoor  
DIN 42600 compatible

## Indications for the ordering

- Type designation
- Nominal primary voltages
- Nominal secondary voltages
  - Frequency
  - Nominal output
  - Accuracy class
- Rated voltage factor
- Thermal burden

## TECHNICAL DATA

Max. Operating Voltage, kV  
Rated Power Freq. Withstand Voltage (1 min)  
Rated Impulse Test Voltage (1.2/50  $\mu$ s)  
Rated Frequency  
Primary Rated Voltage  
Rated Thermal Limiting Output  
Output for Accuracy Classes  
Rated Burdens and Classes

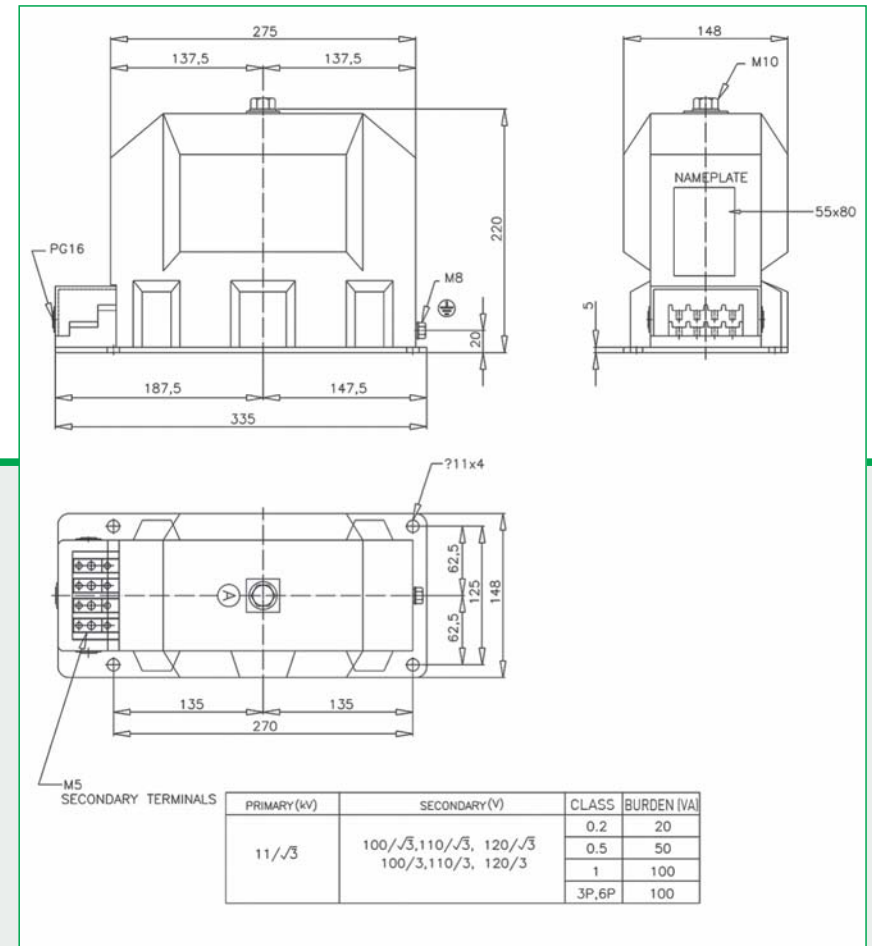
Rated Burden for Protection Class 3P  
Voltage Factor (8h)  
Insulation Class  
Ambient Temperature  
Altitude  
Standard  
Weight

## GDB 12 / GDB 12 S

12kV  
28kV  
75kV  
50Hz, 60Hz  
11/ $\sqrt{3}$  kV  
350 VA  
100/ $\sqrt{3}$ , 110/ $\sqrt{3}$ , 120/ $\sqrt{3}$   
0.2 20 VA  
0.5 50 VA  
1.0 100 VA  
60 VA  
1.9  
E  
-5.....+40 °C  
1000m  
TS, IEC, VDE, ANSI  
24kg

**PFIFFNER**

+ true values

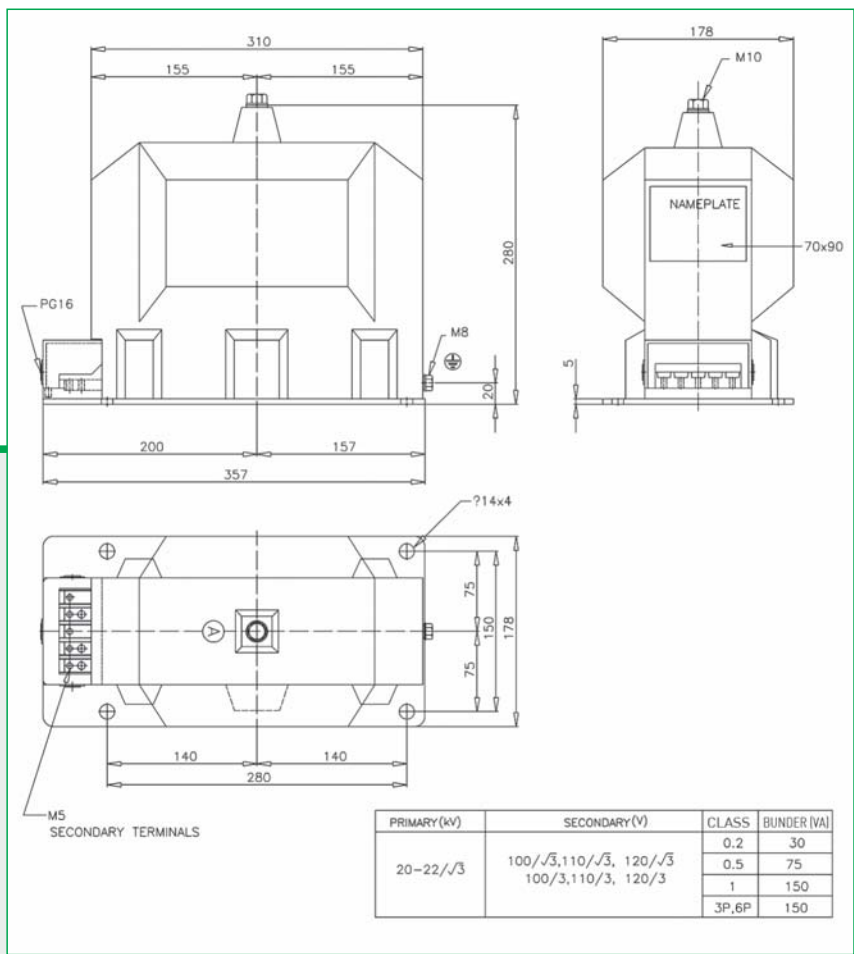


# Support Type Single Pole Indoor Voltage Transformers

## GDA 24

## GDA 24 S

Voltage Transformer  
 Block type  
 Epoxy resin insulation  
 Indoor  
 DIN 42600 compatible



### Indications for the ordering

- Type designation
- Nominal primary voltages
- Nominal secondary voltages
- Frequency
- Nominal output
- Accuracy class
- Rated voltage factor
- Thermal burden

### TECHNICAL DATA

Max. Operating Voltage, kV  
 Rated Power Freq. Withstand Voltage (1 min)  
 Rated Impulse Test Voltage (1.2/50 μs)  
 Rated Frequency  
 Primary Rated Voltage  
 Rated Thermal Limiting Output  
 Output for Accuracy Classes  
 Rated Burdens and Classes

### GDA 24 / GDA 24 S

17 kV/24 kV  
 38 kV/50 kV  
 95 kV/125 kV  
 50Hz, 60Hz  
 15/√3 kV, 20/√3 kV, 22/√3 kV  
 500 VA  
 100/√3, 110/√3, 120/√3  
 0.2 30 VA  
 0.5 75 VA  
 1.0 150 VA  
 60 VA  
 1.9  
 E  
 -5.....+40 °C  
 1000m  
 TS, IEC, VDE, ANSI  
 32kg

Rated Burden for Protection Class 3P  
 Voltage Factor (8h)  
 Insulation Class  
 Ambient Temperature  
 Altitude  
 Standard  
 Weight

# Support Type Double Pole Indoor Voltage Transformers

## GDB 24 GDB 24 S



Voltage Transformer  
Block type  
Epoxy resin insulation  
Indoor  
DIN 42600 compatible

### Indications for the ordering

- Type designation
- Nominal primary voltages
- Nominal secondary voltages
  - Frequency
  - Nominal output
  - Accuracy class
- Rated voltage factor
- Thermal burden

### TECHNICAL DATA

Max. Operating Voltage, kV  
Rated Power Freq. Withstand Voltage (1 min)  
Rated Impulse Test Voltage (1.2/50  $\mu$ s)  
Rated Frequency  
Primary Rated Voltage  
Rated Thermal Limiting Output  
Output for Accuracy Classes  
Rated Burdens and Classes

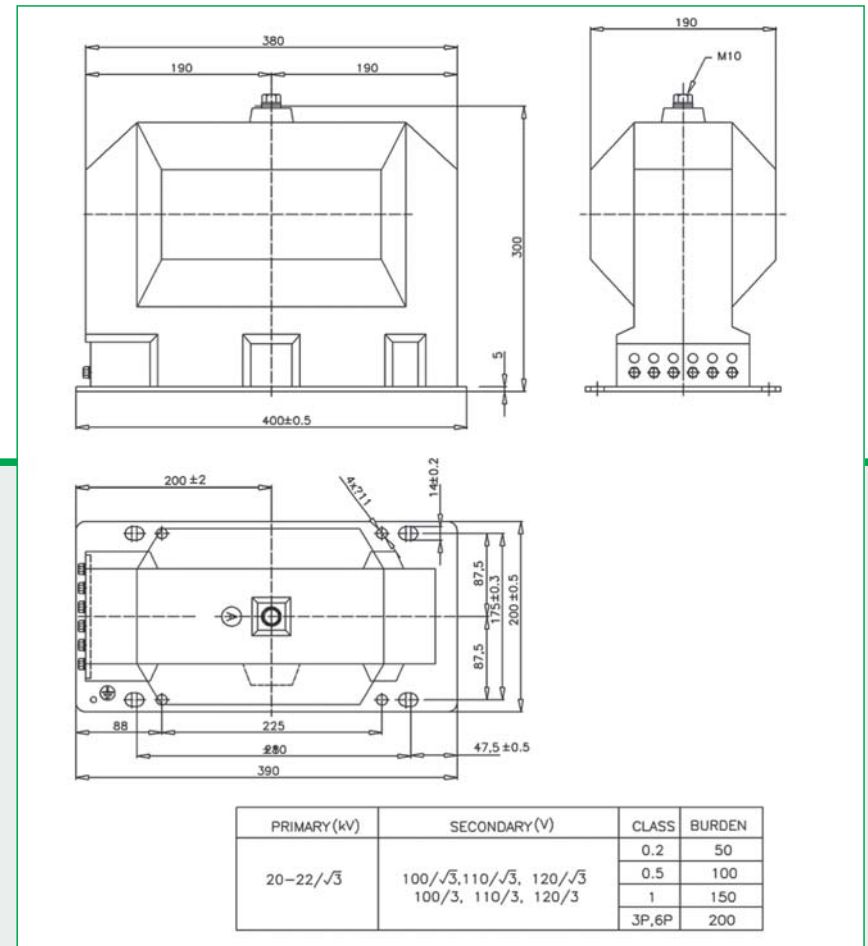
Rated Burden for Protection Class 3P  
Voltage Factor (8h)  
Insulation Class  
Ambient Temperature  
Altitude  
Standard  
Weight

### GDB 24 / GDB 24 S

17 kV/24 kV  
38 kV/50 kV  
95 kV/125 kV  
50Hz, 60Hz  
15/ $\sqrt{3}$  3 kV, 20/ $\sqrt{3}$  3 kV, 22/ $\sqrt{3}$  3 kV  
500 VA  
100/ $\sqrt{3}$  3, 110/ $\sqrt{3}$  3, 120/ $\sqrt{3}$  3  
0.2 30 VA  
0.5 75 VA  
1.0 150 VA  
60 VA  
1.9  
E  
-5.....+40 °C  
1000m  
TS, IEC, VDE, ANSI  
32kg

**PFIFFNER**

+ true values



# Support Type Single Pole Indoor Voltage Transformers

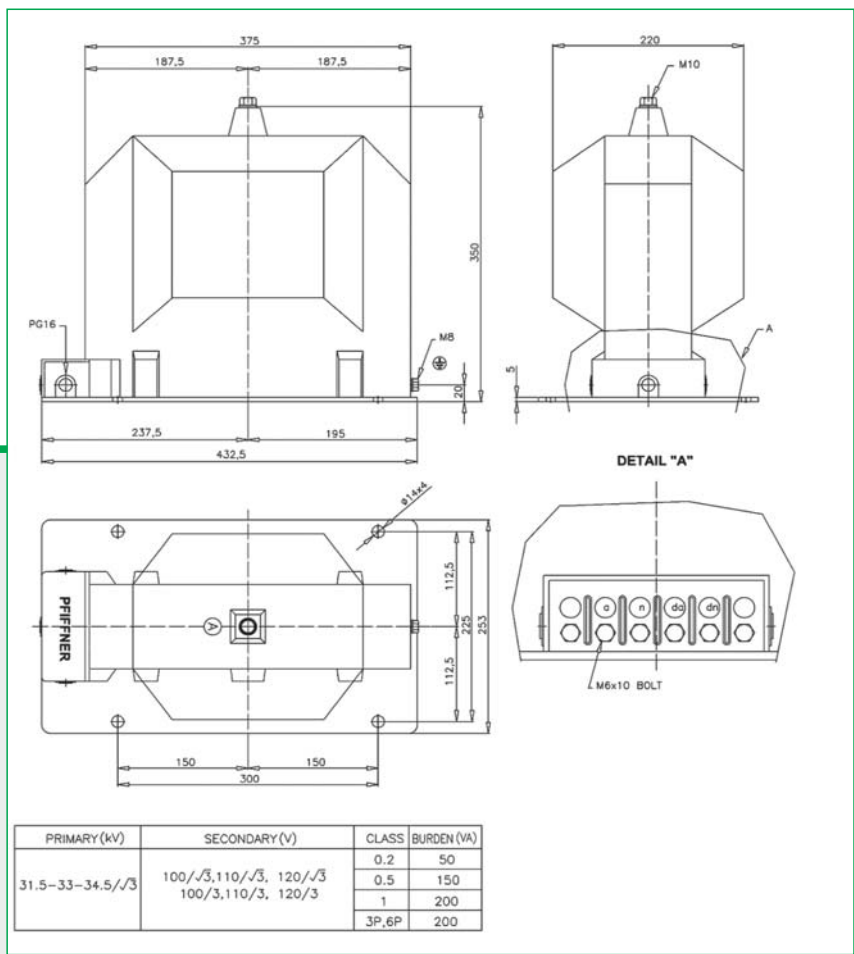
## GDA 36

## GDA 36 S

Voltage Transformer  
 Block type  
 Epoxy resin insulation  
 Indoor  
 DIN 42600 compatible

### Indications for the ordering

- Type designation
- Nominal primary voltages
- Nominal secondary voltages
- Frequency
- Nominal output
- Accuracy class
- Rated voltage factor
- Thermal burden



### TECHNICAL DATA

Max. Operating Voltage, kV  
 Rated Power Freq. Withstand Voltage (1 min)  
 Rated Impulse Test Voltage (1.2/50 μs)  
 Rated Frequency  
 Primary Rated Voltage

### GDA 36 / GDA 36 S

36 kV  
 70 kV  
 170 kV  
 50Hz, 60Hz  
 31.5/√3 kV, 33.3/√3 kV,  
 34.5/√3 kV

Rated Thermal Limiting Output  
 Output for Accuracy Classes  
 Rated Burdens and Classes

600 VA  
 100/√3, 110/√3, 120/√3  
 0.5 60 VA  
 1.0 120 VA

Rated Burden for Protection Class 3P  
 Voltage Factor (8h)  
 Insulation Class  
 Ambient Temperature  
 Altitude  
 Standard  
 Weight

60 VA  
 1.9  
 E  
 -5.....+40 °C  
 1000m  
 TS, IEC, VDE, ANSI  
 36kg

# Support Type Single Pole Indoor Voltage Transformers

**GDB 36**  
**GDB 36 S**



Voltage Transformer  
Block type  
Epoxy resin insulation  
Indoor  
DIN 42600 compatible

## Indications for the ordering

- Type designation
- Nominal primary voltages
- Nominal secondary voltages
  - Frequency
- Nominal output
  - Accuracy class
- Rated voltage factor
  - Thermal burden

### TECHNICAL DATA

Max. Operating Voltage, kV  
Rated Power Freq. Withstand Voltage (1 min)  
Rated Impulse Test Voltage (1.2/50  $\mu$ s)  
Rated Frequency  
Primary Rated Voltage

Rated Thermal Limiting Output  
Output for Accuracy Classes  
Rated Burdens and Classes

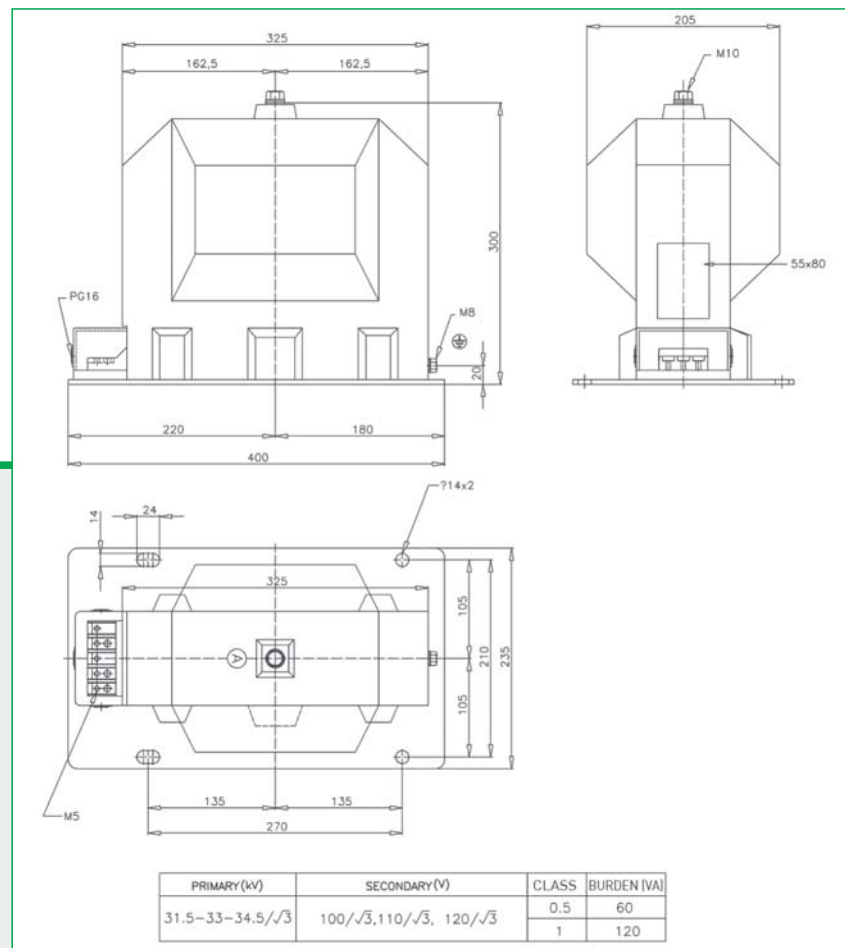
Rated Burden for Protection Class 3P  
Voltage Factor (8h)  
Insulation Class  
Ambient Temperature  
Altitude  
Standard  
Weight

### GDB 36 / GDB 36 S

36 kV  
70 kV  
170 kV  
50Hz, 60Hz  
31.5/ $\sqrt{3}$  3 kV, 33.3/ $\sqrt{3}$  3 kV,  
34.5/ $\sqrt{3}$  3 kV  
400 VA  
100/ $\sqrt{3}$  3, 110/ $\sqrt{3}$  3, 120/ $\sqrt{3}$  3  
0.5 60 VA  
1.0 120 VA  
60 VA  
1.9  
E  
-5.....+40 °C  
1000m  
TS, IEC, VDE, ANSI  
36kg

**PIFFNER**

True values

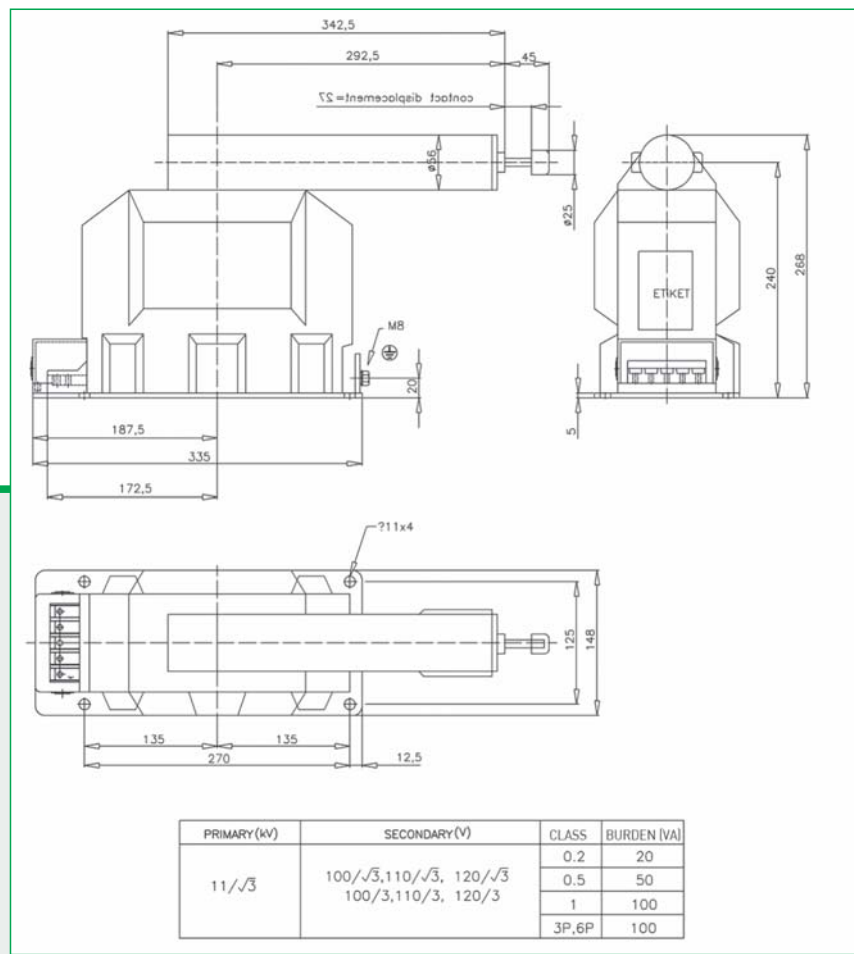




# Support Type Single Pole Indoor Voltage Transformers with Primary Fuse

**GDC 12**  
**GDC 12 S**

Voltage Transformer  
Block type  
Epoxy resin insulation  
Indoor  
DIN 42600 compatible



### Indications for the ordering

- Type designation
- Nominal primary voltages
- Nominal secondary voltages
- Frequency
- Nominal output
- Accuracy class
- Rated voltage factor
- Thermal burden

### TECHNICAL DATA

Max. Operating Voltage, kV  
Rated Power Freq. Withstand Voltage (1 min)  
Rated Impulse Test Voltage (1.2/50 μs)  
Rated Frequency  
Primary Rated Voltage  
Rated Thermal Limiting Output  
Output for Accuracy Classes  
Rated Burdens and Classes

### GDC 12 / GDC 12 S

12kV  
28kV  
75kV  
50Hz, 60Hz  
11/√3 kV  
350 VA  
100/√3, 110/√3, 120/√3  
0.2 20 VA  
0.5 50 VA  
1.0 100 VA  
60 VA  
1.9  
E  
-5.....+40 °C  
1000m  
TS, IEC, VDE, ANSI  
24kg

Rated Burden for Protection Class 3P  
Voltage Factor (8h)  
Insulation Class  
Ambient Temperature  
Altitude  
Standard  
Weight

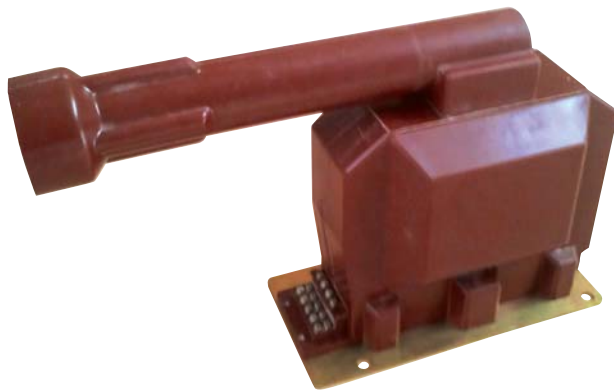
# Support Type Single Pole Indoor Voltage Transformers with Primary Fuse

**GDC 24**  
**GDC 24 S**

Voltage Transformer  
Block type  
Epoxy resin insulation  
Indoor  
DIN 42600 compatible

## Indications for the ordering

- Type designation
- Nominal primary voltages
- Nominal secondary voltages
  - Frequency
  - Nominal output
  - Accuracy class
- Rated voltage factor
- Thermal burden



### TECHNICAL DATA

Max. Operating Voltage, kV  
Rated Power Freq. Withstand Voltage (1 min)  
Rated Impulse Test Voltage (1.2/50  $\mu$ s)  
Rated Frequency  
Primary Rated Voltage  
Rated Thermal Limiting Output  
Output for Accuracy Classes  
Rated Burdens and Classes

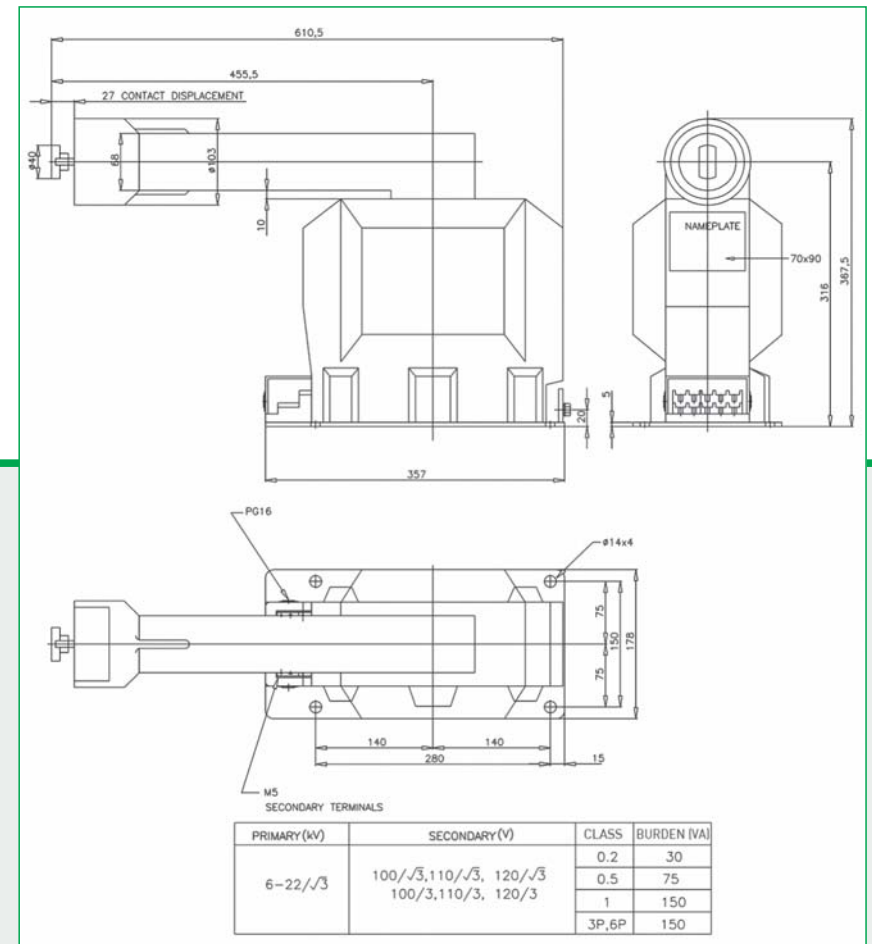
Rated Burden for Protection Class 3P  
Voltage Factor (8h)  
Insulation Class  
Ambient Temperature  
Altitude  
Standard  
Weight

### GDC 24 / GDC 24 S

17 kV/24 kV  
38 kV/50 kV  
95 kV/125 kV  
50Hz, 60Hz  
15/ $\sqrt{3}$  3 kV, 20/ $\sqrt{3}$  3 kV, 22/ $\sqrt{3}$  3 kV  
500 VA  
100/ $\sqrt{3}$  3, 110/ $\sqrt{3}$  3, 120/ $\sqrt{3}$  3  
0.2 30 VA  
0.5 75 VA  
1.0 150 VA  
60 VA  
1.9  
E  
-5.....+40 °C  
1000m  
TS, IEC, VDE, ANSI  
32kg

**PIFFNER**

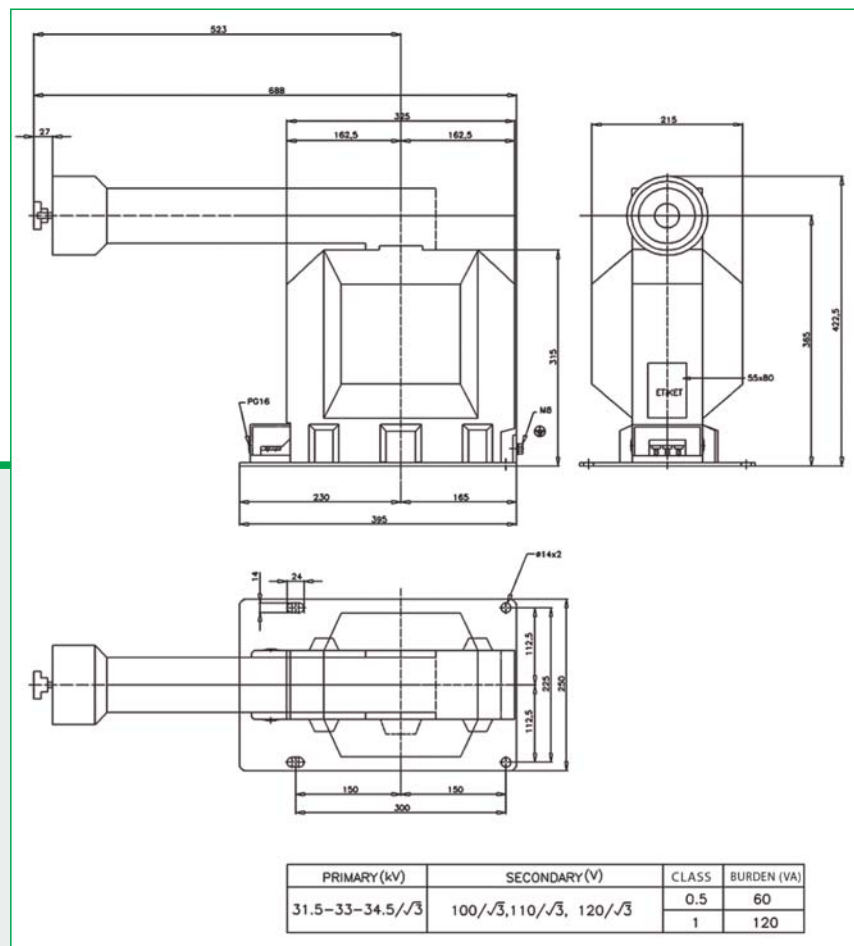
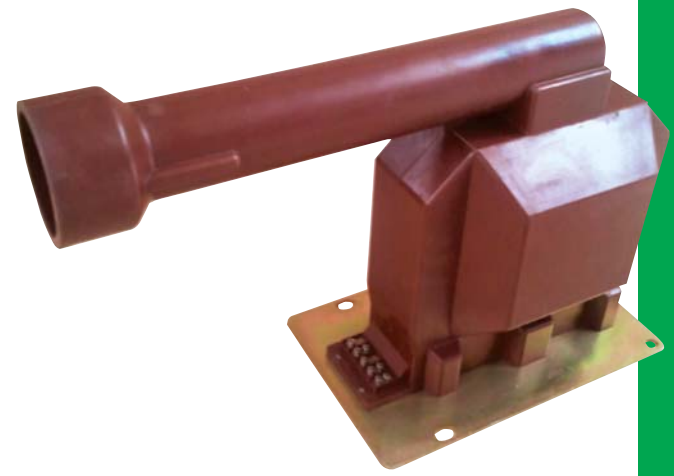
+ true values



# Support Type Single Pole Indoor Voltage Transformers with Primary Fuse

**GDC 36**  
**GDC 36 S**

Voltage Transformer  
Block type  
Epoxy resin insulation  
Indoor  
DIN 42600 compatible



### Indications for the ordering

- Type designation
- Nominal primary voltages
- Nominal secondary voltages
- Frequency
- Nominal output
- Accuracy class
- Rated voltage factor
- Thermal burden

### TECHNICAL DATA

Max. Operating Voltage, kV  
Rated Power Freq. Withstand Voltage (1 min)  
Rated Impulse Test Voltage (1.2/50 μs)  
Rated Frequency  
Primary Rated Voltage  
Rated Thermal Limiting Output  
Output for Accuracy Classes  
Rated Burdens and Classes

### GDC 36 / GDC 36 S

36 kV  
70 kV  
170 kV  
50Hz, 60Hz  
31.5/√3 kV, 33.3/√3 kV, 34.5/√3 kV  
400 VA  
100/√3, 110/√3, 120/√3  
0.5 60 VA  
1.0 120 VA  
60 VA  
1.9  
E  
-5.....+40 °C  
1000m  
TS, IEC, VDE, ANSI  
50kg

Rated Burden for Protection Class 3P  
Voltage Factor (8h)  
Insulation Class  
Ambient Temperature  
Altitude  
Standard  
Weight

# Support Type Double Pole Indoor Voltage Transformers

## GD2A 12 GD2A 12 S



Voltage Transformer  
Block type  
Epoxy resin insulation  
Indoor  
DIN 42600 compatible

### Indications for the ordering

- Type designation
- Nominal primary voltages
- Nominal secondary voltages
  - Frequency
- Nominal output
  - Accuracy class
- Rated voltage factor
  - Thermal burden

### TECHNICAL DATA

Max. Operating Voltage, kV  
Rated Power Freq. Withstand Voltage (1 min)  
Rated Impulse Test Voltage (1.2/50  $\mu$ s)  
Rated Frequency  
Primary Rated Voltage  
Rated Thermal Limiting Output  
Output for Accuracy Classes  
Rated Burdens and Classes

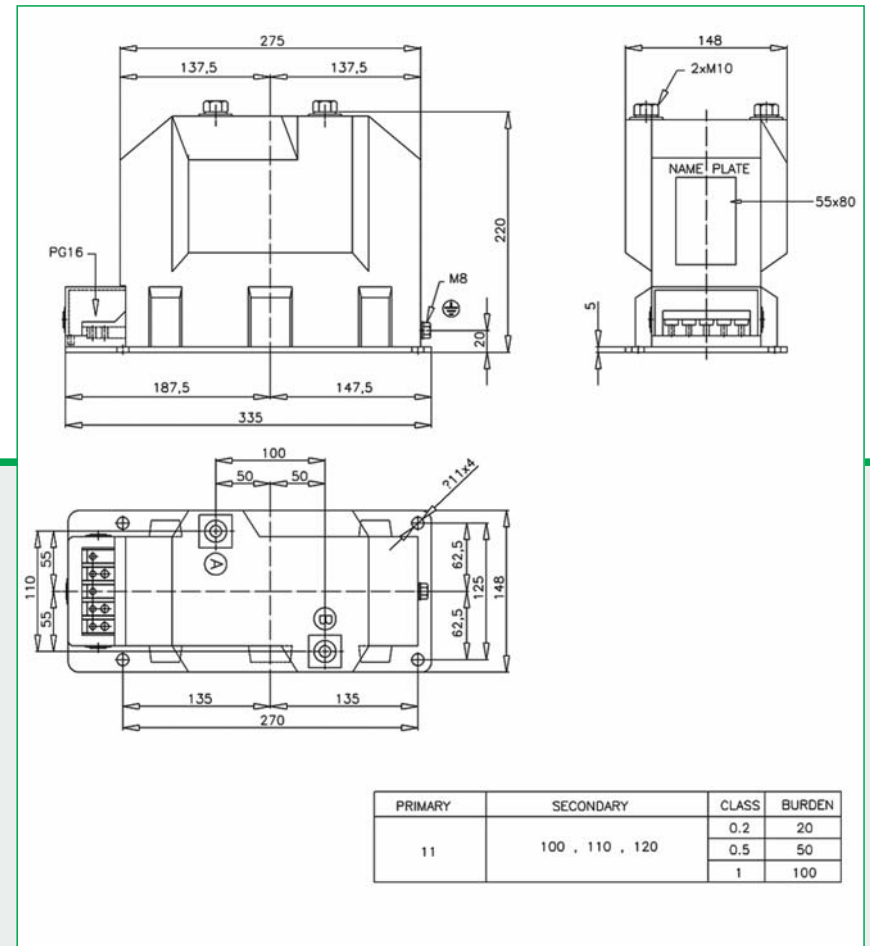
Voltage Factor  
Insulation Class  
Ambient Temperature  
Altitude  
Standard  
Weight

### GD2A 12 / GD2A 12 S

12 kV  
28 kV  
75 kV  
50Hz, 60Hz  
11k  
400 VA  
100, 110, 120  
0.2 20VA  
0.5 50 VA  
1.0 100 VA  
1.2 continuous  
E  
-5.....+40 °C  
1000m  
TS, IEC, VDE, ANSI  
28kg

**PIFFNER**

➤ true values



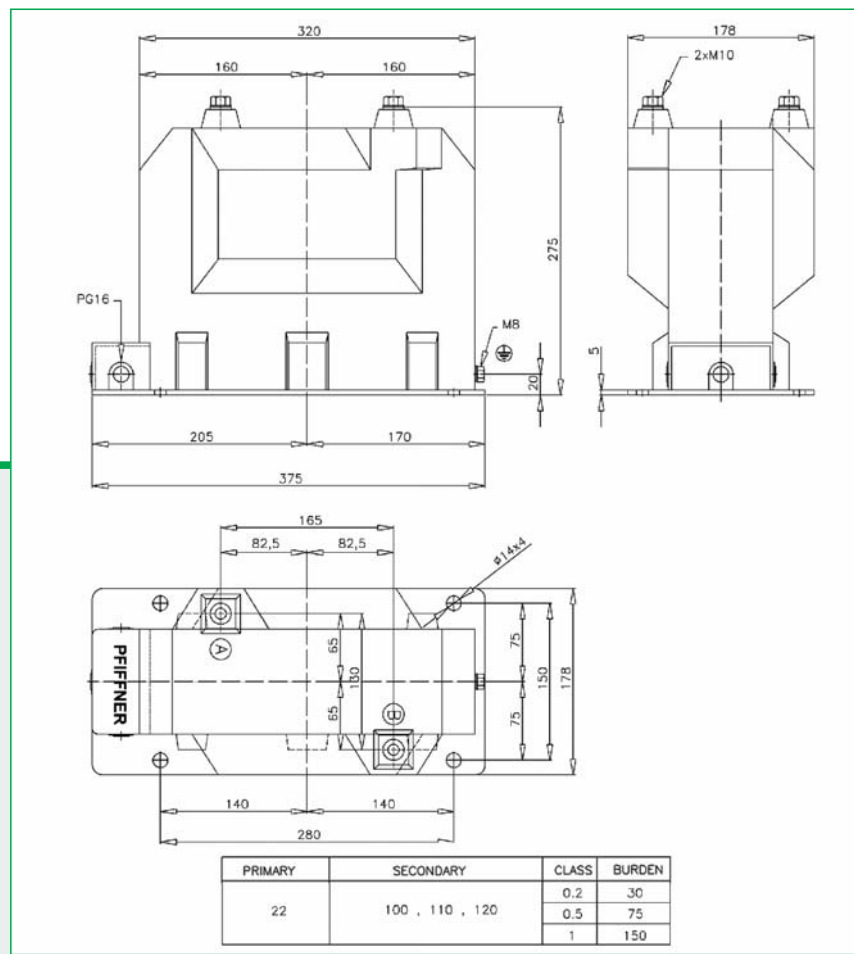
PRIMARY	SECONDARY	CLASS	BURDEN
11	100 , 110 , 120	0.2	20
		0.5	50
		1	100

# Support Type Double Pole Indoor Voltage Transformers

## GD2A 24

## GD2A 24 S

Voltage Transformer  
 Block type  
 Epoxy resin insulation  
 Indoor  
 DIN 42600 compatible



### Indications for the ordering

- Type designation
- Nominal primary voltages
- Nominal secondary voltages
- Frequency
- Nominal output
- Accuracy class
- Rated voltage factor
- Thermal burden

### TECHNICAL DATA

Max. Operating Voltage,kV  
 Rated Power Freq. Withstand Voltage (1 min)  
 Rated Impulse Test Voltage (1.2/50 μs)  
 Rated Frequency  
 Primary Rated Voltage  
 Rated Thermal Limiting Output  
 Output for Accuracy Classes  
 Rated Burdens and Classes

### GD2A 24 / GD2A 24 S

24 kV  
 50 kV  
 125 kV  
 50Hz,60Hz  
 22k  
 600 VA  
 100, 110, 120  
 0.2 30VA  
 0.5 75 VA  
 1.0 150 VA  
 1.2 continuous  
 E  
 -5.....+40 °C  
 1000m  
 TS,IEC,VDE,ANSI  
 32kg

Voltage Factor  
 Insulation Class  
 Ambient Temperature  
 Altitude  
 Standard  
 Weight

# Support Type Double Pole Indoor Voltage Transformers

**GD2A 36**  
**GD2A 36 S**



Voltage Transformer  
Block type  
Epoxy resin insulation  
Indoor  
DIN 42600 compatible

## Indications for the ordering

- Type designation
- Nominal primary voltages
- Nominal secondary voltages
  - Frequency
  - Nominal output
  - Accuracy class
- Rated voltage factor
- Thermal burden

### TECHNICAL DATA

Max. Operating Voltage, kV  
Rated Power Freq. Withstand Voltage (1 min)  
Rated Impulse Test Voltage (1.2/50  $\mu$ s)  
Rated Frequency  
Primary Rated Voltage  
Rated Thermal Limiting Output  
Output for Accuracy Classes  
Rated Burdens and Classes

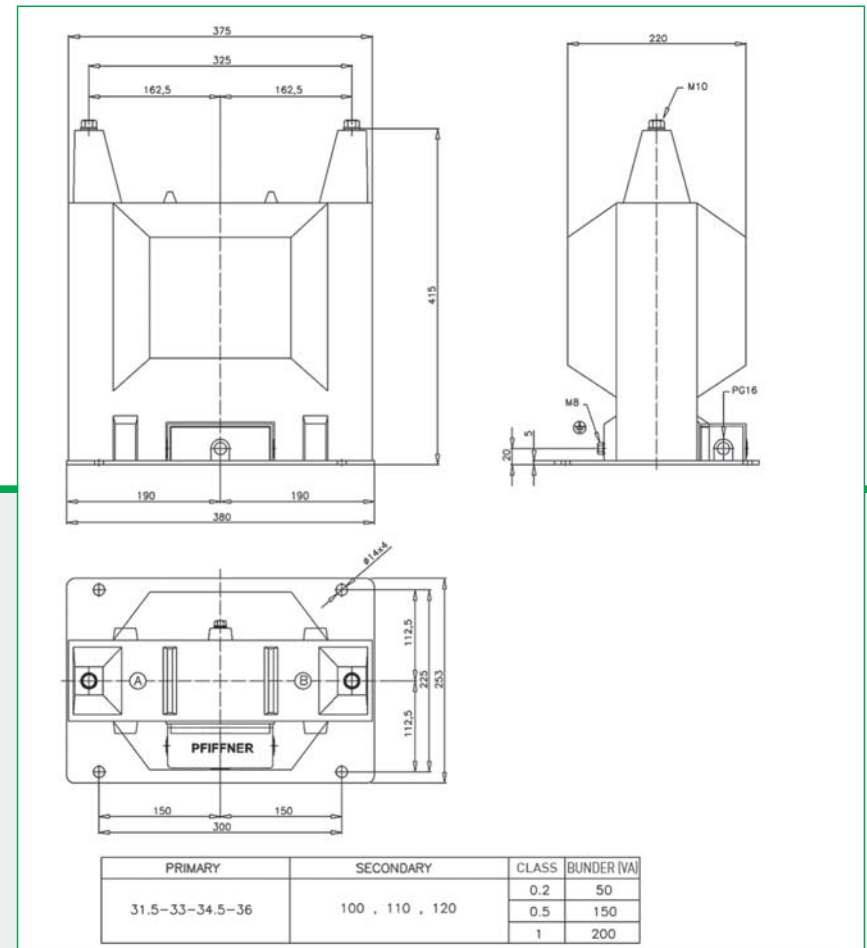
Voltage Factor  
Insulation Class  
Ambient Temperature  
Altitude  
Standard  
Weight

### GD2A 36 / GD2A 36 S

36 Kv  
70 kV  
170 kV  
50Hz, 60Hz  
31.5kV, 33kV, 34.5kV, 36  
750 VA  
100, 110, 120  
0.2 50VA  
0.5 150 VA  
1.0 200 VA  
1.2 continuous  
E  
-5.....+40 °C  
1000m  
TS, IEC, VDE, ANSI  
45kg

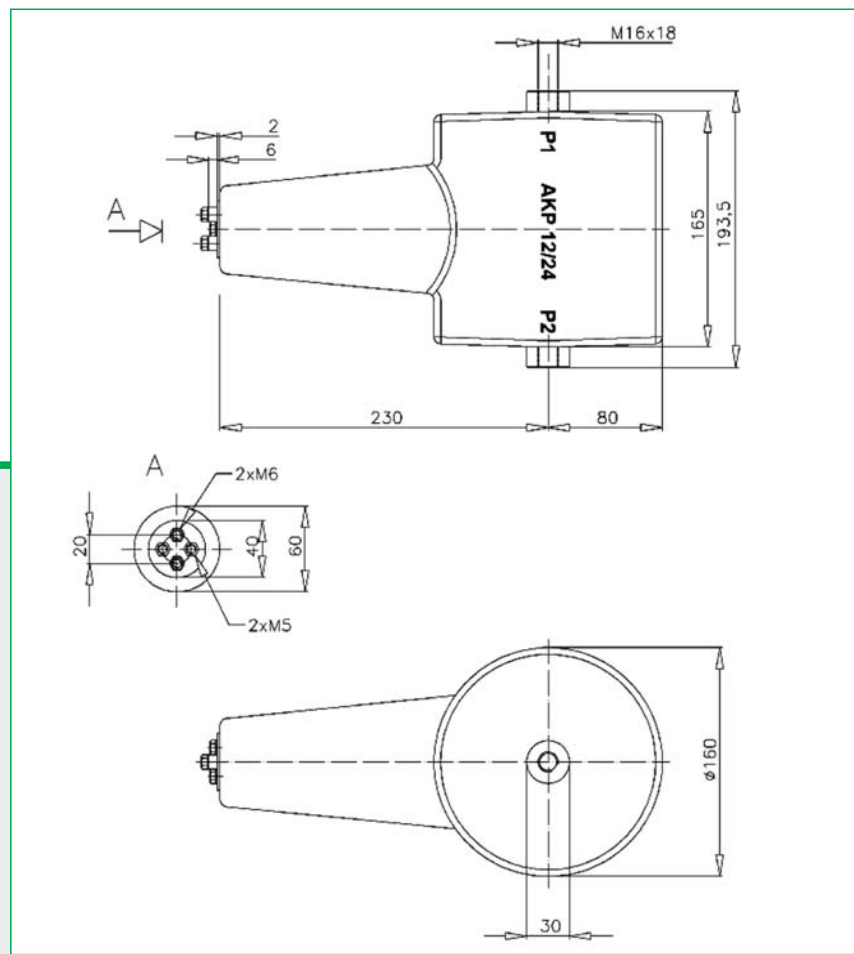
**PIFFNER**

+ true values



# Indoor Current Transformers AKP 24

Current Transformer  
Epoxy resin insulation  
Indoor



### Indications for the ordering

- Type designation
- Nominal primary current
- Nominal secondary current
- Frequency
- Nominal output
- Accuracy class
- Short-time thermal current

### TECHNICAL DATA

Max. Operating Voltage, kV	24kV
Rated Power Freq. Withstand Voltage (1 min)	50kV
Rated Impulse Test Voltage (1.2/50 μs)	125kV
Rated Frequency	50Hz, 60Hz
Primary Rated Current	50-600A
Output for Accuracy Classes	1A, 5A
Rated Short Time Thermal Current I <sub>th</sub> (1s)	Max. 30kA
Rated Dynamic Current I <sub>dyn</sub>	2.5xI <sub>th</sub> , max. 75kA
Insulation Class	E
Ambient Temperature	-5.....+40 °C
Altitude	1000m
Standard	TS, IEC, VDE, ANSI
Weight	9 kg

### AKP 24

# Indoor Current Transformers

## AKP 36



Current Transformer  
Epoxy resin insulation  
Indoor

### Indications for the ordering

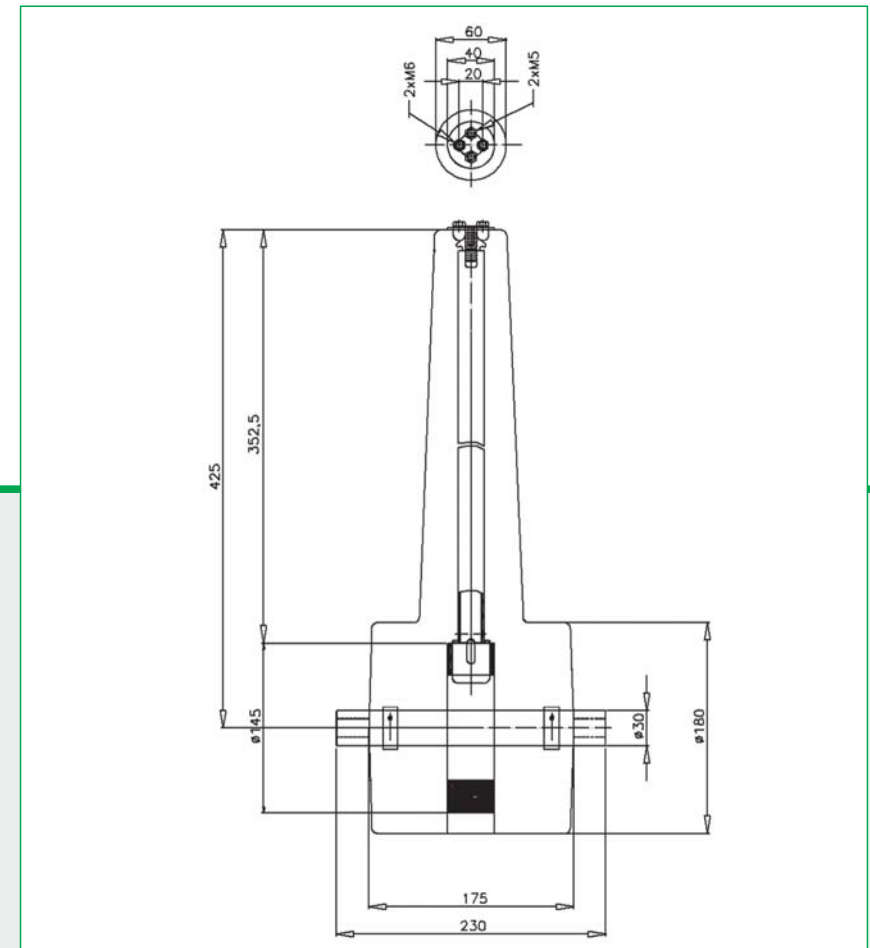
- Type designation
- Nominal primary current
- Nominal secondary current
  - Frequency
  - Nominal output
  - Accuracy class
- Short-time thermal current

### TECHNICAL DATA

Max. Operating Voltage,kV	36kV
Rated Power Freq. Withstand Voltage (1 min)	70kV
Rated Impulse Test Voltage (1.2/50 μs)	170kV
Rated Frequency	50Hz,60Hz
Primary Rated Current	50-600A
Output for Accuracy Classes	1A,5A
Rated Short Time Thermal Current I <sub>th</sub> (1s)	Max. 30kA
Rated Dynamic Current I <sub>dyn</sub>	2.5xI <sub>th</sub> ,max.75kA
Insulation Class	E
Ambient Temperature	-5.....+40 °C
Altitude	1000m
Standard	TS,IEC,VDE,ANSI
Weight	30 kg

**PIFFNER**

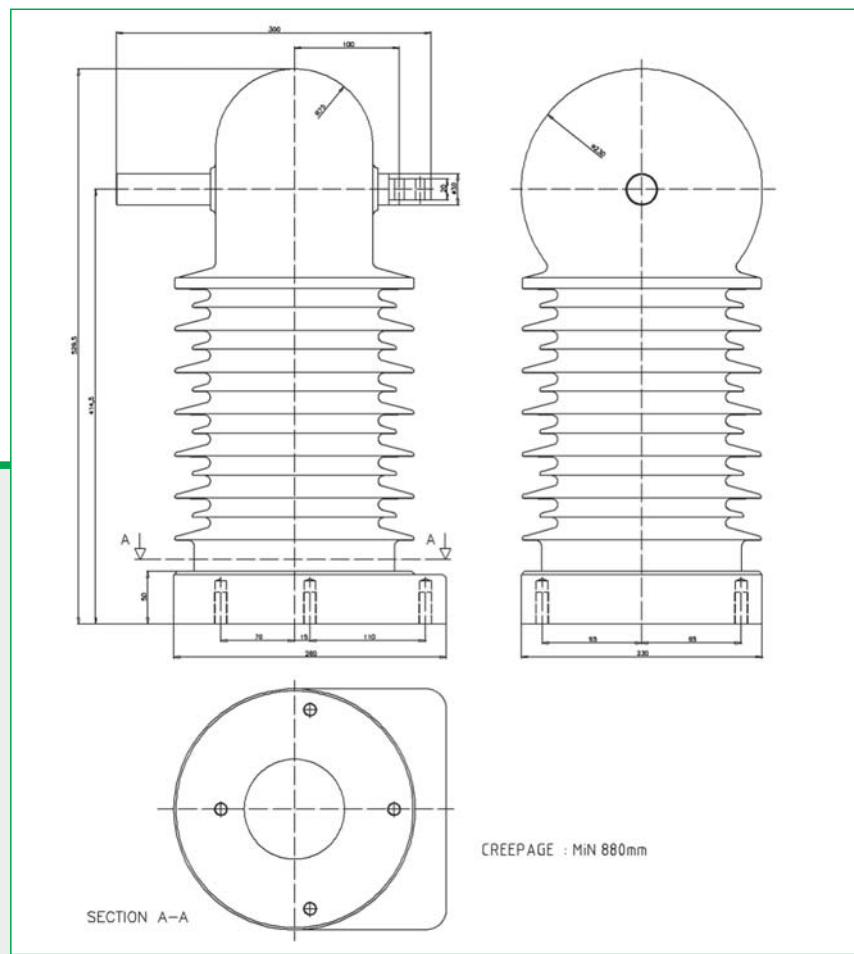
+ true values





# Outdoor Current Transformers EZD 7961

Current Transformer  
Block type  
Epoxy resin insulation  
Outdoor  
DIN 42600 compatible



## Indications for the ordering

- Type designation
- Nominal primary current
- Nominal secondary current
- Frequency
- Nominal output
- Accuracy class
- Short-time thermal current

## TECHNICAL DATA

Max. Operating Voltage,kV	36kV
Rated Power Freq. Withstand Voltage (1 min)	70kV
Rated Impulse Test Voltage (1.2/50 μs)	170kV
Rated Frequency	50Hz,60Hz
Primary Rated Current	400-2000A
Output for Accuracy Classes	1A,5A
Rated Short Time Thermal Current I <sub>th</sub> (1s)	Max. 40kA
Rated Dynamic Current I <sub>dyn</sub>	2.5xI <sub>th</sub>
Insulation Class	E
Ambient Temperature	-25.....+40°C
Altitude	1000m
Standard	TS,IEC,VDE,ANSI
Weight	50kg

## EZD 7961

# Milestones

**PIFFNER**

gerek degerler

PIFFNER Instrument Transformers Ltd  
Swiss family-owned  
company with around 200 employees.  
Part of PFIFFNER Holding Ltd.

- 1927 Company founded by Emil Pfiffner Invention of the cascade potential transformer
- 1953 Acquisition of the company by Fritz Hunziker Senior
- 1987 Fritz Hunziker Junior becomes managing director
- 2002 Extension of production to include 420 kV/550 kV
- 2004 Set-up of PFIFFNER Transformatör Ltd, Turkey
- 2006 Founding of PFIFFNER do Brasil Ltd
- 2008 Beat Bertschi takes over operational management
- 2010 Founding of PFIFFNER Deutschland Ltd

**PIFFNER**  
Transformatör Ltd,  
Ankara

Subsidiary of PFIFFNER Instrument Transformers Ltd. Around 60 employees. Production of cast resin current and voltage transformers up to 36 kV. Licensed production of oilpaper insulated outdoor transformers up to 420 kV. Moved to the new factory in Oct. 2010.

**PIFFNER**

gerek degerler

[www.pfiffner.com.tr](http://www.pfiffner.com.tr)

**MGC**  
MOSER-GLASER

MGC Moser-Glaser Ltd  
Swiss family-owned  
company with around 100 employees.  
Part of PFIFFNER Holding Ltd.

- 1914 Company founded
- 1947 First application of epoxy resin insulated 20 kV instrument transformers in the world
- 1958 Invention of RIP technology using fully insulated Duresca busbars
- 2004 Oliver Härdi joins – company results show a marked improvement due to his commitment
- 2005 Move to new building in Kaiseraugst
- 2006 Production launch of transformer bushings in RIP technology and silicone rubber sheds
- 2010 Successful introduction of 245 kV bushings

**PIFFNER**  
do Brasil Ltd,  
Itajaí

Subsidiary of PFIFFNER Instrument Transformers Ltd. Built on the new site in Itajaí. Licensed manufacturing of oilpaper insulated outdoor transformers up to 145 kV. The company produces the most up-to-date products in the Brazilian market.

**PIFFNER**

true values

**PIFFNER**  
Deutschland Ltd,  
Itzehoe

Construction of a production site in 2010 for SF6 insulated outdoor instrument transformers up to 550 kV, together with the experienced transformer specialist, Dr. H. J. Voss.

**PIFFNER**

true values



mohaupt  
high voltage



LOW VOLTAGE

MEDIUM VOLTAGE

HIGH VOLTAGE

PIFFNER Instrument Transformers Ltd is the only instrument transformer manufacturer in Switzerland. This internationally successful, family owned company employs around 200 employees in its main facility. PFIFFNER offers highest quality, maintenance-free, long-life products and innovative solutions. With production facilities on three continents, we cater for the requirements of the particular locations and, in this way, emphasise our customer proximity. Our business philosophy includes a clear commitment to Europe as a production location. This is why our employees identify themselves with our products and our customers. On the part of our customers, we enjoy their high esteem, loyalty and satisfaction. In this way, we stress the importance of our motto "true values".

**PIFFNER**

+ true values

Internet [www.pfiffner.com.tr](http://www.pfiffner.com.tr)

Ankara-Çankırı Karayolu 7. km.  
(Aselsan Yanı) Akyurt  
ANKARA / TÜRKİYE  
E-mail [satis@pfiffner.com.tr](mailto:satis@pfiffner.com.tr)

Phone + 90 (312) 293 70 00 (pbx)  
+ 90 (312) 847 55 21  
+ 90 (312) 847 54 59  
Fax + 90 (312) 847 54 21